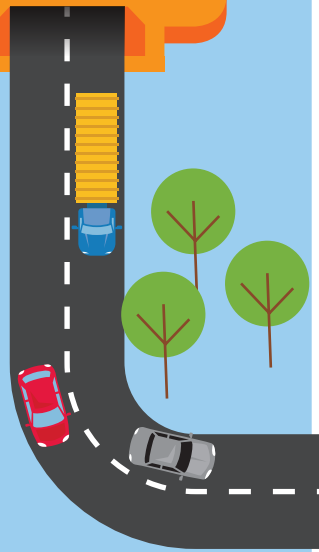




Sydney Gateway

Community Update

Autumn 2019



We are moving forward with planning for Sydney Gateway - a new toll-free connection from the Sydney motorway network at St Peters Interchange to Sydney Airport's International and Domestic terminals. It will make journeys from west and south-west Sydney to Sydney Airport easier, faster and safer.

This community update provides information about:



- why we need Sydney Gateway
- how you can provide feedback during our consultation period
- how it will improve travel on Sydney roads
- the planning processes required.

Why we need Sydney Gateway

The NSW Government's vision for Sydney is one of an integrated road and public transport network that gives you the freedom to choose how and when you get around, no matter where you live and work. To achieve this vision, we are building Sydney Gateway, to complete the missing links in the motorway network, improve traffic flow and reduce travel times.

This high capacity motorway network is vital for supporting the growth of our communities, places and economy. Sydney Gateway will greatly improve the way you travel to Sydney Airport. Importantly, it will also return local streets to the communities in Mascot by allowing 10,000 trucks and up to 100,000 vehicles a day to travel on Sydney Gateway.

Sydney Airport



Your feedback matters

Over the past nine months we have met with local communities about this city shaping project.

We are now inviting your feedback on Sydney Gateway's concept design from **27 May to 21 June 2019**. Come along to our various information and drop in sessions in Mascot, Tempe and Wolli Creek to have your say, and questions answered.

To find out more about Sydney Gateway and where to meet the project team, or to submit your comments online please visit: rms.nsw.gov.au/sydneygatewayportal

Your feedback is important and will help us to deliver a project that helps address your needs and supports future growth.

Benefits for Sydney

Easier

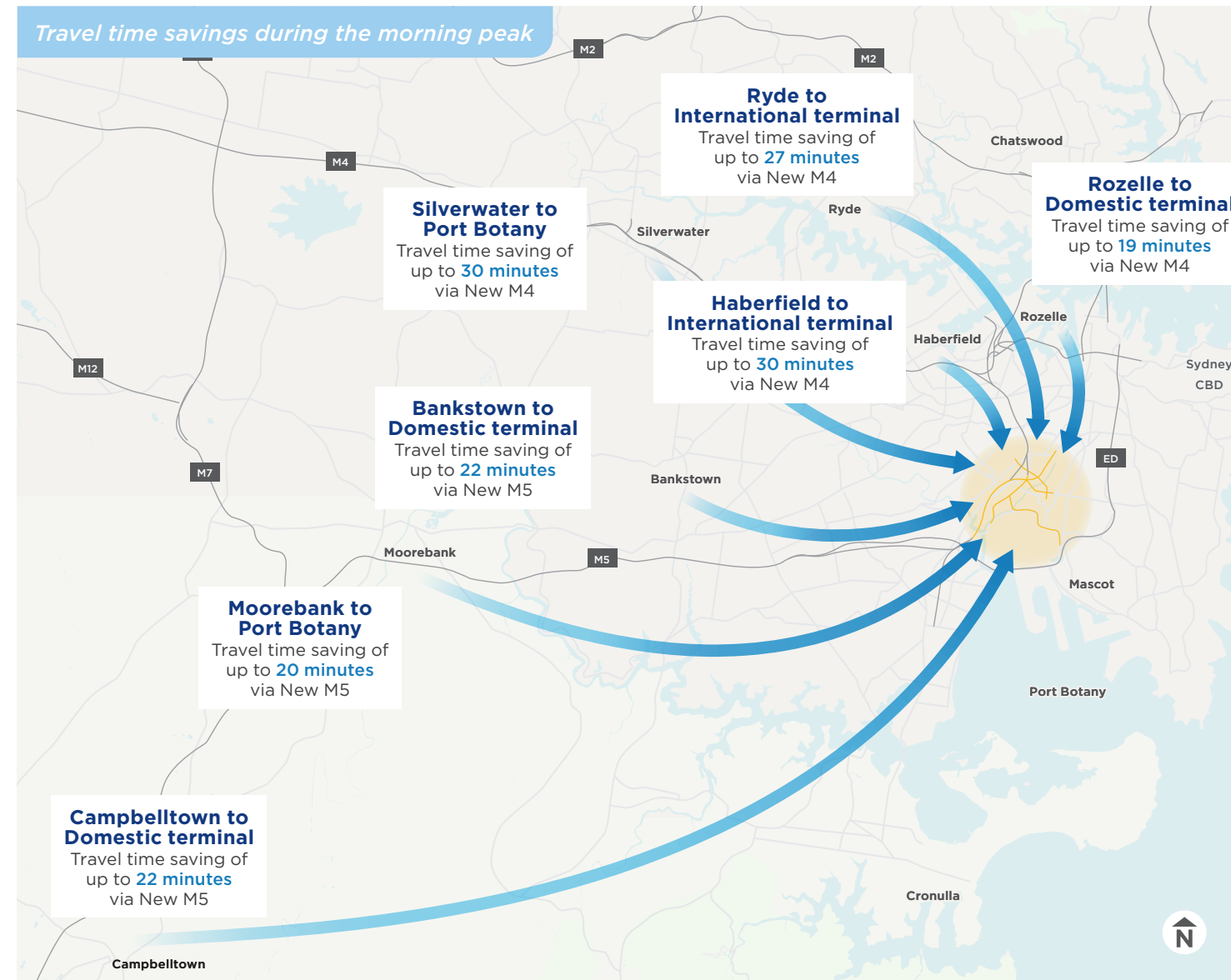
- Easier journeys to and from Sydney Airport and improved connections between the terminals
- New roads to Sydney Airport to transport 100,000 vehicles a day to cater for forecast growth in passenger and air freight
- Reduced congestion by widening Qantas Drive from two to three lanes in each direction
- Improved access to all airport terminals for over-height vehicles with an increased clearance of up to 5.1 metres (from 4.3 metres)
- Improved traffic flow in Mascot.

Faster

- Improved travel times to the airport precinct and Port Botany.

Safer

- Reduced cars and trucks on local roads – returning local streets to local communities
- Reduced heavy vehicles and cars on major roads including:
 - Southern Cross Drive
 - King Georges Road
 - M5 East tunnel.



Fast facts



26 sets of traffic lights bypassed from Parramatta to Sydney Airport's Domestic precinct using the Sydney motorway network

A dedicated **500 metre 'flyover' road** to Sydney Airport's Domestic precinct



Enabling **10,000 heavy vehicles** per day to travel on Sydney Gateway rather than through local Mascot roads



Around **50%** of port-bound heavy vehicles will use Sydney Gateway by 2036

Sydney Airport



Currently more than 150,000 people visit Sydney Airport every day, with around 75 per cent travelling by road.

It is expected the number of visitors will increase from 44.4 million in 2018 to 65.6 million by 2039.

Air freight will also grow by 58 per cent to one million tonnes by 2039. All air freight cargo carried to and from Sydney Airport travels by road.

Port Botany



Freight volumes in NSW will increase by 28 per cent by 2036.

- 50 per cent increase in Greater Sydney
- 12 per cent increase in regional NSW

NSW Ports forecasts that container freight handled by Port Botany will increase by 77 per cent, from 14 mega tonnes per annum (mtpa) in 2016 to 25 mtpa in 2036. Currently eight out of 10 containers are carried to Port Botany by road.

Mascot and Botany



The suburbs and communities surrounding Sydney Airport are changing, with major new residential apartment buildings, commercial sites and hotels.

This development has added more vehicles onto the busy roads around Sydney Airport and Port Botany.

Investing in the future

By 2056, there will be more than 12 million people that call New South Wales home. This growth means there will be more motorists and commuters on our roads travelling to destinations throughout Sydney CBD and the Greater Sydney area.

Transport for NSW's *Future Transport Strategy 2056* provides a 40-year vision for our transport system. The strategy outlines a vision, strategic directions and customer outcomes, with infrastructure and services underpinning the delivery of these directions across the state.

The strategy focuses on the role of transport in delivering movement and place outcomes that support the character of the places and communities we want for the future.

A key element of the broader transport strategy is Sydney Gateway.

Sydney Airport is Australia's busiest airport and Port Botany is one of the highest frequency freight terminals, serving state, national and international markets. Sydney Gateway will greatly improve access to this important precinct.

Sydney Gateway will strengthen Sydney's position as a global city, providing more efficient connections to major business hubs, key commercial centres and freight terminals across Greater Sydney.

Sydney Gateway concept design

Sydney Gateway will provide toll-free connections to Sydney Airport's Domestic and International terminals.

1 Alternative shared cycle and pedestrian pathway
New alternative cycle and pedestrian pathway to connect from Alexandra Canal to Mascot at Coward Street.

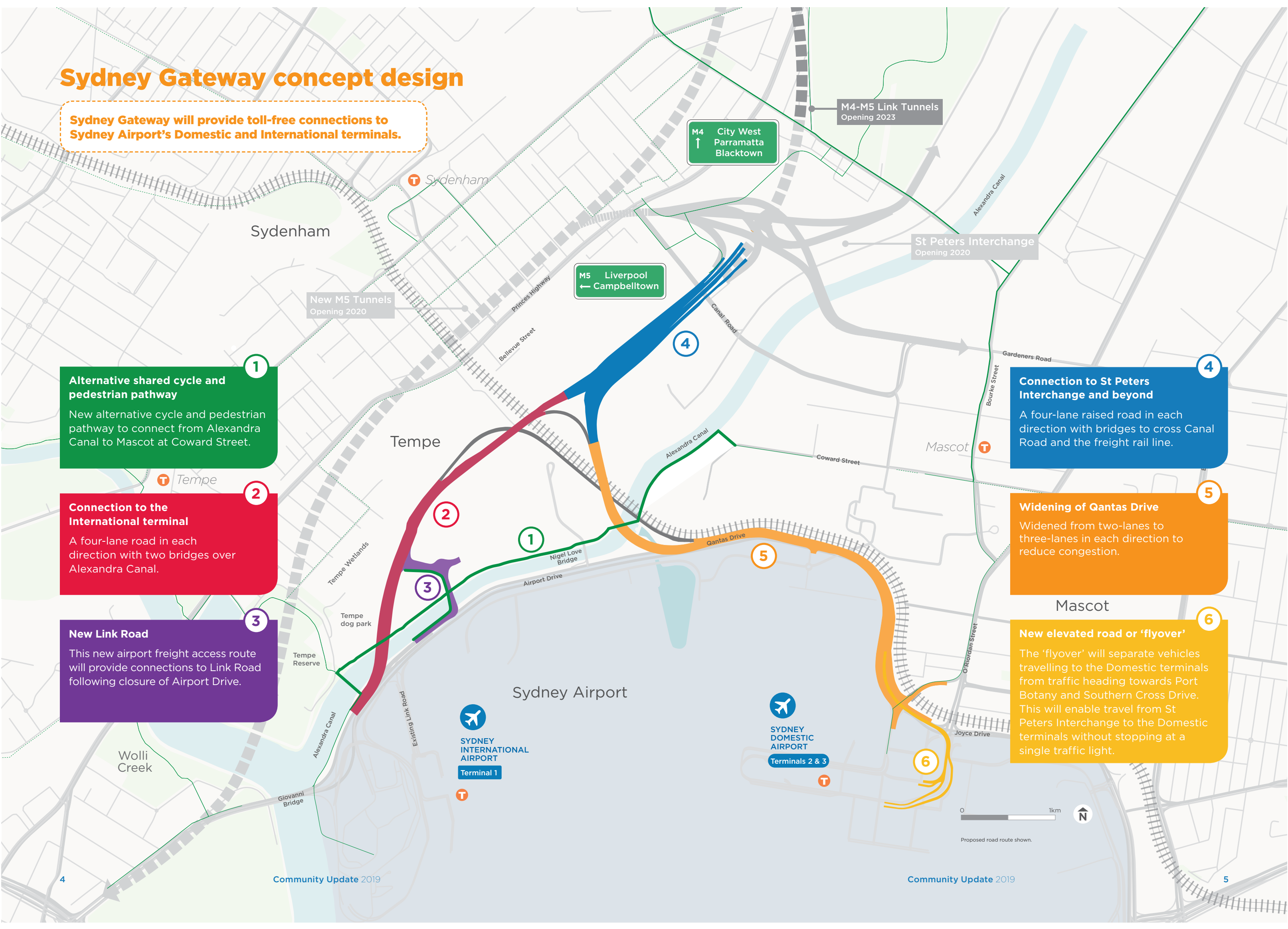
2 Connection to the International terminal
A four-lane road in each direction with two bridges over Alexandra Canal.

3 New Link Road
This new airport freight access route will provide connections to Link Road following closure of Airport Drive.

4 Connection to St Peters Interchange and beyond
A four-lane raised road in each direction with bridges to cross Canal Road and the freight rail line.

5 Widening of Qantas Drive
Widened from two-lanes to three-lanes in each direction to reduce congestion.

6 New elevated road or 'flyover'
The 'flyover' will separate vehicles travelling to the Domestic terminals from traffic heading towards Port Botany and Southern Cross Drive. This will enable travel from St Peters Interchange to the Domestic terminals without stopping at a single traffic light.



How we have responded to your feedback

Based on your feedback we have refined Sydney Gateway's concept design, taking the following into consideration.

P Parking - we will ensure parking spaces for construction vehicles are available within Sydney Gateway construction sites.

Shared cycle and pedestrian pathways - we thank you for your feedback about the need to keep a canal-side shared cycle and pedestrian pathway, and we have been working closely with Sydney Airport to develop a practical option for a northern canal route.

We invite you to provide us with your feedback on this route to help further inform our design.

We will be providing temporary routes during construction so you will still be able to use

shared cycle and pedestrian pathways while we build Sydney Gateway.

We are also working with Transport for NSW to look at opportunities to improve options for pedestrians and cyclists in the precinct.

Noise - noise walls will be explored in some areas of Tempe and Mascot. We will work with residents to minimise impacts.

Open space - we are committed to improving open space on Tempe Lands after construction. We will work with the Inner West Council and the local community to develop a Landscape Plan.

We value your ideas and input into this process.

Preparing planning approvals for Sydney Gateway

Sydney Gateway passes through both Sydney Airport land, owned by the Commonwealth, and land under the jurisdiction of NSW. As a result, it is subject to two planning processes under NSW and Commonwealth legislation - an Environmental Impact Statement (EIS) and a Major Development Plan (MDP).

The combined EIS and MDP will be placed on public exhibition, where you will be able to make a submission to the NSW Department of Planning and Environment (DPE), and Sydney Airport.

The document outlines the key features of the project and assesses its potential environmental and social impacts during construction and operation. Details of how potential impacts will be managed will be provided.

The state process requires the document to be on public exhibition for a minimum of 28 calendar days. The length of exhibition is determined by DPE. Submissions are made to DPE.

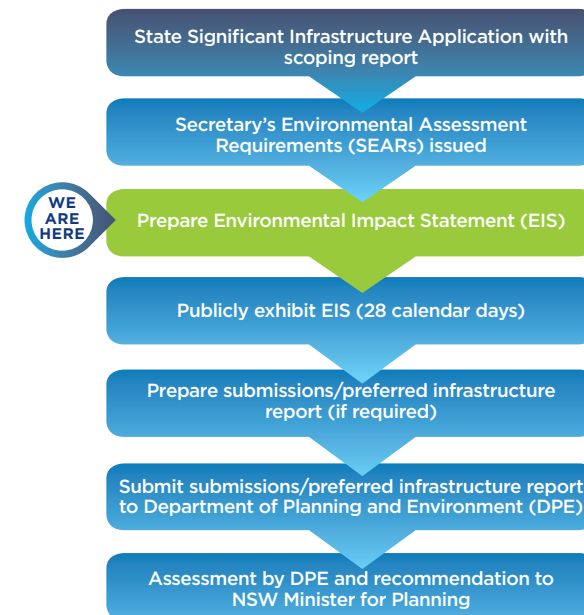
The Commonwealth process requires the document to be on display for a minimum of 60 business days. Submissions are made to Sydney Airport.

Advertisements will be placed in local newspapers with details of the exhibition, including the consultation events and where you can view the combined EIS and MDP. All submissions received will be provided to and considered by Roads and Maritime and the proposed project adjusted as required.

For further information on the planning approval process visit: rms.nsw.gov.au/sydneygateway



NSW process



Commonwealth process



Have your say

We would like to hear your feedback on the Sydney Gateway concept design, and to discuss the issues that you would like us to consider further.

From **27 May** to **21 June 2019**, we will be door knocking, and hosting community information drop-in sessions and information booths in Tempe, Mascot, Botany, and Wolli Creek. You can find out more, meet the Sydney Gateway team and provide comments at the sessions detailed below.

Where you can find us

Information sessions

- **Saturday 1 June** 1pm - 4pm
Clock On/Off Café, Tempe
- **Thursday 6 June** 8am - 11am
Patchett's Pies, Mascot
- **Thursday 13 June** 4pm - 7pm
Rowers on Cook, Wolli Creek

Information booths

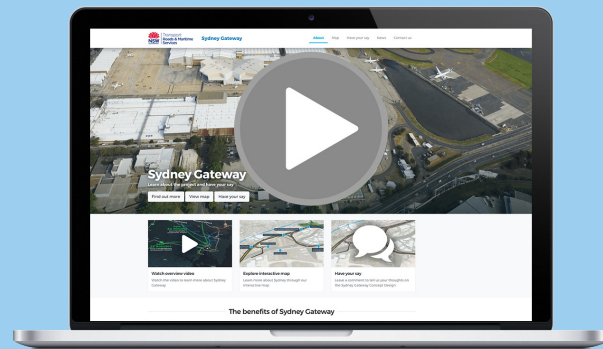
- **Friday 31 May** 10am - 1pm
East Village Shopping Centre
- **Wednesday 5 June** 10am - 1.30pm
Mascot Woolworths
- **Saturday 8 June** 9am - 12pm
Wolli Creek Housing Complex
(opposite train station)

We look forward to meeting you and answering your questions about Sydney Gateway.

Post your comments on our online 'have your say' map via our portal

Visit our interactive online portal to view Sydney Gateway's key features at rms.nsw.gov.au/sydneygatewayportal

Our online portal will give you a snapshot of Sydney Gateway, its new connections to Sydney Airport and how to use this new road.



What to do when you login to the portal:

1. Check out Sydney Gateway's key features
2. Plot your feedback on our online 'have your say' map.


Community drop in session, Tempe




Contact the Sydney Gateway team

 rms.nsw.gov.au/sydneygatewayportal

 rms.nsw.gov.au/sydneygateway

 sydneygateway@rms.nsw.gov.au

 1800 654 446

 Roads and Maritime Services
Locked Bag 928, North Sydney NSW 2059



If you need help understanding this information, please contact the Translating and Interpreting Service on 131 450 and ask them to call us on 1800 654 446.

Privacy Roads and Maritime Services ("RMS") is subject to the Privacy and Personal Information Protection Act 1998 ("PPIP Act") which requires that we comply with the Information Privacy Principles set out in the PPIP Act. All information in correspondence is collected for the sole purpose of assisting the assessment of this proposal. The information received, including names and addresses of respondents, may be published in subsequent documents unless a clear indication is given in the correspondence that all or part of that information is not to be published. Otherwise RMS will only disclose your personal information, without your consent, if authorised by the law. Your personal information will be held by RMS. You have the right to access and correct the information if you believe that it is incorrect.

99% recycled stock, FSC.

RMS.19.1250