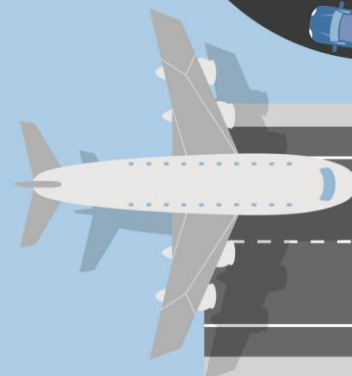




Sydney Gateway

Groundwater sampling and monitoring work in Mascot and Tempe, June 2020



We will be conducting groundwater monitoring and sampling along Airport Drive, Qantas Drive and business locations in Mascot and Tempe.

These works will provide important information to help us build Sydney Gateway.

What does our work involve?

We will be taking samples of water from underground wells in various locations.

Our team will remove existing road caps to monitor the groundwater through a PVC pipe.

The areas of work are shown on the map over the page.

Work along Airport Drive and Qantas Drive will be staged to ensure that we reduce impacts to drivers and pedestrians.

Our work schedule

Work will mostly be carried out during the day, with some night work, between the **9th – 30th June 2020**, weather permitting.

Work will take up to an hour at each of the locations identified on the map (over the page).

How will our work affect you?

The work does not involve machinery so will not generate much noise, vibration or dust.

Lane closures will be in place during night work and road users are asked to follow the reduced speed limit in place, the direction of traffic controllers and road work signage.

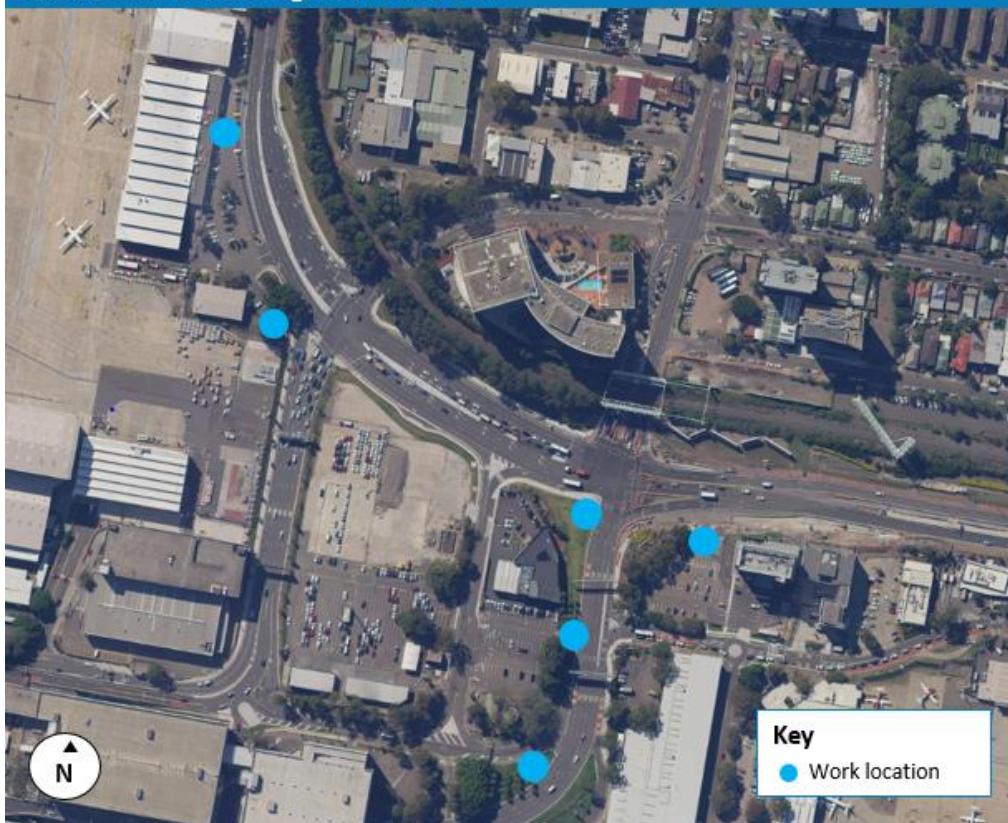
For the latest traffic updates

Call **132 701** Visit **livetraffic.com** Download the App **Live Traffic NSW**

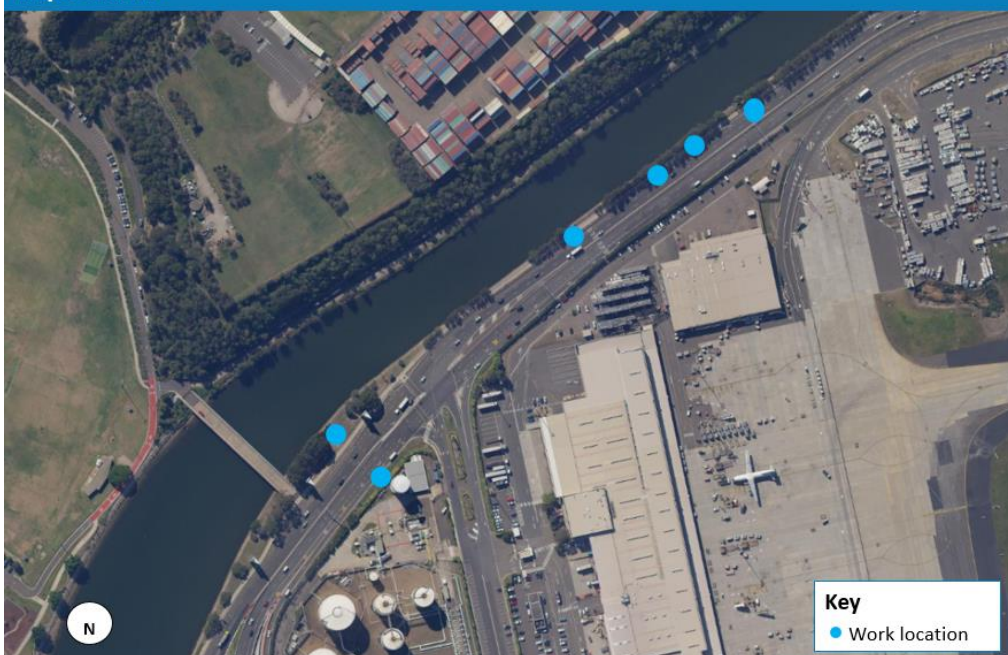


Location of investigation work

Qantas Drive and Sir Reginald Ansett Drive



Airport Drive



Contact our team

Thank you for your patience while we complete this important work. Please contact us if you have more questions.



nswroads.work/sydneygatewayportal



nswroads.work/sydneygateway



sydneygateway@transport.nsw.gov.au



1800 654 446



Transport for NSW
Locked Bag 928, North Sydney NSW 2059



If you need help understanding this information, please contact the Translating and Interpreting Service on 131 450 and ask them to call us on 1800 654 446.

Privacy Transport for NSW are collecting your personal information in connection with the Sydney Gateway ("the Project"). In addition to collecting your name and contact details we may collect other information such as your submissions and other communications with us. We will retain and use this information for consultation purposes, including communications and analysis in connection with the Project. We will not disclose your personal information to third parties unless authorised by law and if we include your submissions in any public report we will not identify you. Providing your personal information is voluntary but if you do not provide it we may not include you on our stakeholder database and you might miss further consultation opportunities. Your personal information will be held by us and you can contact us to access or correct it. Please write to us at sydneygateway@rms.nsw.gov.au or call on 1800 654 446.