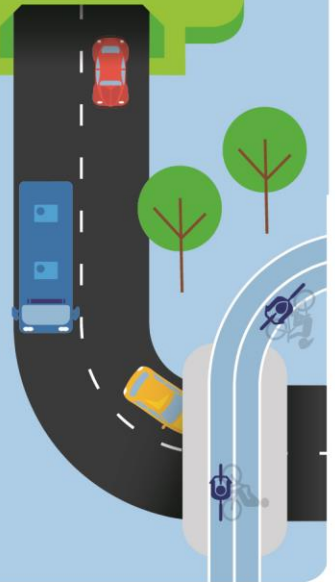


August 2020



# M6 Stage 1

## Utility investigations near the intersection of Princes Highway and President Avenue, Kogarah from Monday 24 August



The M6 Stage 1 will connect President Avenue at Kogarah to the M8 at Arncliffe, connecting southern Sydney to the wider motorways network.

From Monday 24 August, we will be carrying out utility investigations near the intersection of Princes Highway and President Avenue, Kogarah to help us design and build the M6 Stage 1 project.

### What does our work involve?

Our work involves carrying out investigations to locate existing underground gas lines.

We will be using light vehicles, a vacuum truck, concrete saw and a generator to complete the work.

A map of our work area is shown on this page.

### Our work schedule

Our work needs to be carried out near the road and must take place at night to minimise any impact to traffic.

We expect our work to take three nights to complete, weather permitting.

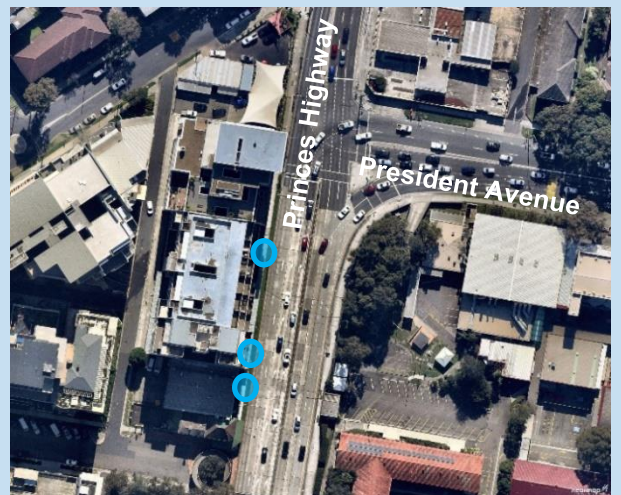
Our night work hours are:

**8pm to 5am, Monday to Friday.**

### How will our work affect you?

Our survey work will create some noise, but we expect our noisy work to be completed before 11pm. For the safety of our workers and the community, there will be traffic control in place during our work. We ask that pedestrians and motorists take care when navigating around our work area.

The safety and wellbeing of our workforce and the wider community is our highest priority. Our people are following hygiene and appropriate social distancing measures and will continue to do so.



Location of work

## Contact our team

Thank you for your patience while we complete this important work. Please contact us if you have more questions.

-  [nswroads.work/M6portal](https://nswroads.work/M6portal)
-  [nswroads.work/M6](https://nswroads.work/M6)
-  [M6Stage1@transport.nsw.gov.au](mailto:M6Stage1@transport.nsw.gov.au)
-  1800 789 297
-  Transport for NSW  
Locked Bag 928, North Sydney NSW 2059



If you need help understanding this information, please contact the Translating and Interpreting Service on 131 450 and ask them to call us on 1800 789 297.

**Privacy** Transport for NSW are collecting your personal information in connection with the M6 Stage 1 ("the Project"). In addition to collecting your name and contact details we may collect other information such as your submissions and other communications with us. We will retain and use this information for consultation purposes, including communications and analysis in connection with the Project. We will not disclose your personal information to third parties unless authorised by law and if we include your submissions in any public report we will not identify you. Providing your personal information is voluntary but if you do not provide it we may not include you on our stakeholder database and you might miss further consultation opportunities. Your personal information will be held by us and you can contact us to access or correct it. Please write to us at [M6Stage1@transport.nsw.gov.au](mailto:M6Stage1@transport.nsw.gov.au) or call on 1800 789 297.