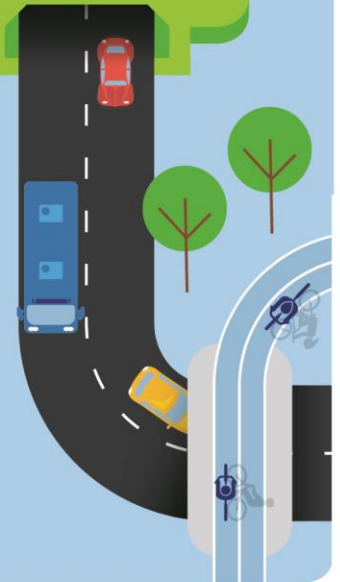




M6 Stage 1

Brighton Memorial Playing Fields Construction update



The M6 Stage 1 will connect President Avenue at Kogarah to the M8 at Arncliffe, connecting southern Sydney to the wider motorways network.

We have now completed the synthetic football field at Brighton Memorial Playing Fields, Brighton Le Sands. This field is available for day time bookings from 24 April via Bayside Council.

We understand how important this area is for you and we are continuing to work with Bayside Council and the community to upgrade the remaining areas at Brighton Memorial Playing Fields, Brighton Le Sands. This work is expected to be completed by the end of the year.

Progress so far and next steps

The completed work includes:

- installing drainage
- installing field fencing
- laying synthetic grass
- line markings.

Work which is currently underway includes:

- installing power to the field lighting
- constructing the amenities building
- building the memorial wall
- building the carpark
- installing playground equipment and shade structures.

Booking the field

Bayside Council will manage the football field at Brighton Memorial Playing Fields. To make a booking or enquiry about the synthetic football field, please contact Bayside Council's Customer Service Centre on 1300 581 299.

Parking

Work on the new parking areas at Brighton Memorial Playing Fields is underway and will be available to use later this year.

When using the synthetic football field at Brighton Memorial Playing Fields, please use the parking available at the Bayside Council carpark in Rockdale Bicentennial Park, Brighton Le Sands. Access to the car park is via West Botany Street, Rockdale.

There will be no pedestrian or vehicle access to the field via Sybil Lane until later this year.

Accessing the field

When parking at Rockdale Bicentennial Park, use the path through to Brighton Memorial Playing Fields. Access to the field is via entrances on the western side of the field. The map over the page provides further information about access.

Thank you

We acknowledge that living and being around construction sites can be challenging for the community. We thank you for your patience while we complete this important work.

Location of synthetic playing field at Brighton Memorial Playing Fields, Brighton Le Sands



Contact our team

Thank you for your patience while we complete this important work. Please contact us if you have more questions.

-  nswroads.work/M6portal
-  nswroads.work/M6
-  M6Stage1@transport.nsw.gov.au
-  1800 789 297
-  Transport for NSW
Locked Bag 928, North Sydney NSW 2059



If you need help understanding this information, please contact the Translating and Interpreting Service on 131 450 and ask them to call us on 1800 789 297.

Privacy Transport for NSW are collecting your personal information in connection with the M6 Stage 1 ("the Project"). In addition to collecting your name and contact details we may collect other information such as your submissions and other communications with us. We will retain and use this information for consultation purposes, including communications and analysis in connection with the Project. We will not disclose your personal information to third parties unless authorised by law and if we include your submissions in any public report we will not identify you. Providing your personal information is voluntary but if you do not provide it we may not include you on our stakeholder database and you might miss further consultation opportunities. Your personal information will be held by us and you can contact us to access or correct it. Please write to us at M6Stage1@transport.nsw.gov.au or call on 1800 789 297.