



Australian Government

BUILDING OUR FUTURE



M12 Motorway

Community update

June 2019



On behalf of the Australian and NSW governments, Roads and Maritime Services is planning the M12 Motorway as part of the \$4.1 billion Western Sydney Infrastructure Plan. The M12 Motorway will provide direct access to Western Sydney International Airport at Badgerys Creek and connect to Sydney's motorway network.

Roads and Maritime announced a preferred corridor route in November 2016 and sought community feedback in February 2018 on the preliminary design and access strategy to inform the next stage of the design.

Community consultation report

In February and March 2018, Roads and Maritime invited community feedback on the preliminary design and access strategy for the M12 Motorway.

Community members provided feedback at one of our three information sessions, via the project's online portal, or through mail, email or phone contact with the project team. Roads and Maritime considered the comments on the preliminary design and access strategy and refined the M12 Motorway design.

The comments and our responses to them are detailed in the community consultation report available on the M12 Motorway webpage at rms.nsw.gov.au/m12.

Key benefits

- Direct access to Western Sydney International Airport at Badgerys Creek from the M7 Motorway and the upgraded The Northern Road
- Improved access to the Western Sydney Aerotropolis and the South West Priority Growth Area
- Increased road capacity for future growth and development
- Improved traffic safety for road users
- Pedestrian and cyclist infrastructure
- Improved freight movement to key commercial centres
- Reduced congestion impact on the community and businesses by providing more capacity.

Wylde Mountain Bike Trail

The preferred M12 Motorway route will require changes to the existing Wylde Mountain Bike Trail located within the Western Sydney Parklands. Roads and Maritime is working closely with the Western Sydney Parklands Trust and Bicycle NSW on plans to relocate the trail. The relocated bike trail is expected to be completed before construction of the M12 Motorway starts.

For more information about the Wylde Mountain Bike Trail visit the Western Sydney Parklands Trust website.



An aerial view of the Wylde Mountain Bike Track, designed by Brett Barnes. Photo by Brett Hemmings for Western Sydney Parklands.

About Brett Barnes

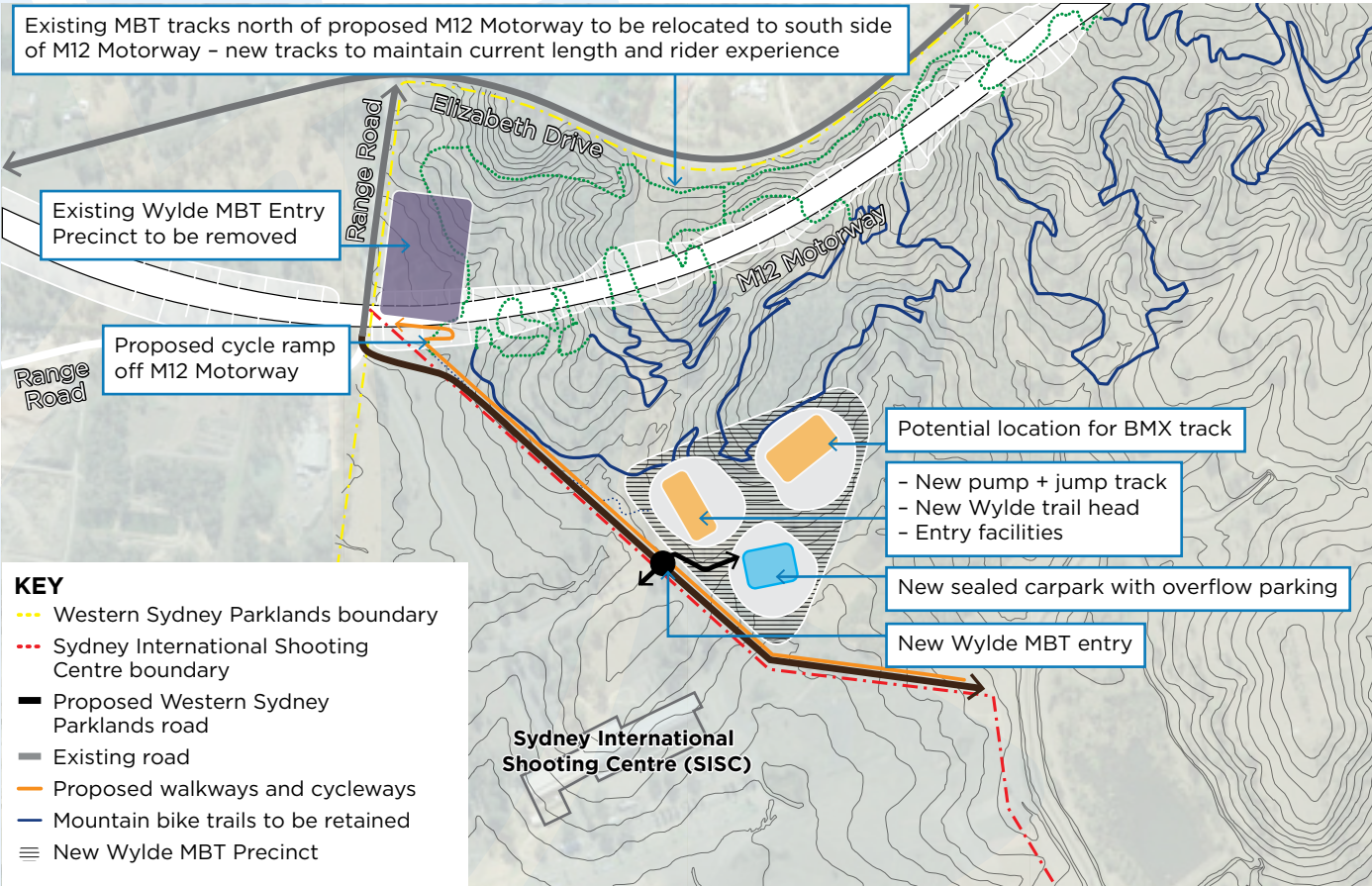
In 2014, the Wylde Mountain Bike Trail in Western Sydney Parklands opened to the public. The trail and trailhead area was designed by Brett Barnes, owner of Dirtz.

Brett's original design of the Wylde Mountain Bike Trail was inspired by the opportunity to encourage all members of the community – young or old, experienced or new to the sport – to try mountain bike riding at a location close to their homes.

Today, Brett is again busy helping the Western Sydney Parklands Trust with the next incarnation of the trail and the trailhead. 'I chose to be involved in the redesign of the bike trail because of the enormous number of people that the facility has brought enjoyment to since its opening, and I really wanted to be a part of the continuation of this,' he says.

Western Sydney Parklands Trust will be using Brett's design to build an innovative facility that incorporates a small loop for children and beginners as well as a three, six and 12 kilometre trail for riders to tackle as their skills improve.

Map of relocated Wylde Mountain Bike Trail (MBT)



Investigation work



Drilling boreholes to collect samples along the M12 Motorway corridor

We have:

- taken a number of samples from cored boreholes to reveal materials contained below the ground.
- completed lab testing on soil and rock samples to determine key properties of the soil and rock.
- installed devices in the boreholes to measure groundwater pressure and water level. This helps us determine the stability of slopes, effectiveness of ground improvement techniques and the effect of construction on surrounding structures.

Did you know...

Asbestos containing material (ACM) is commonly found during construction excavations in Western Sydney

Asbestos was widely used in a range of building and construction materials up until 1987. Up to 90 per cent of the ACM produced in or imported into Australia was used for the manufacture of building products, especially materials commonly known as 'fibro' or 'asbestos cement sheeting'.

These products are made from a bonding compound, such as cement, mixed with a small proportion (usually less than 15 per cent) of asbestos. Bonded ACM is unlikely to become airborne under normal circumstances. It is what we commonly find during construction excavations due to widespread poor disposal practices in past decades.

When found in soil during construction, Roads and Maritime follows a strict and responsible process approved by SafeWork NSW and the NSW Environment Protection Authority, to safely dispose of the material. We follow world's best practice for the handling and disposal of ACM.

We will notify residents if asbestos containing material is located during construction.

Project development and approval process

July 2015 – November 2016

Identification of preferred corridor route

- Announce study area
- Desktop environmental investigations and a review of feedback from the community to inform the long list of corridor options
- Assessment of long list of corridors considering constraints and results of initial investigations to determine short list
- Community feedback on short list
- Field investigations in each corridor to inform the preferred corridor route option.

November 2016 – November 2017

Development of preliminary design

- Commence design development
- Begin detailed environmental field investigations within the preferred corridor including flora and fauna, Aboriginal cultural heritage, land contamination, traffic and noise
- Display preliminary design and access strategy for community comment.

November 2017 – 2019

Development of EIS and design

- Consider feedback from the community on preliminary design and access strategy
- Continue field investigations and commence additional investigations including socio economic factors, geotechnical, water quality, air quality, land use and flooding.
- Continue design development considering feedback from the community and field investigation results
- Assess impacts and investigate mitigation measures
- Exhibit EIS for community comment.

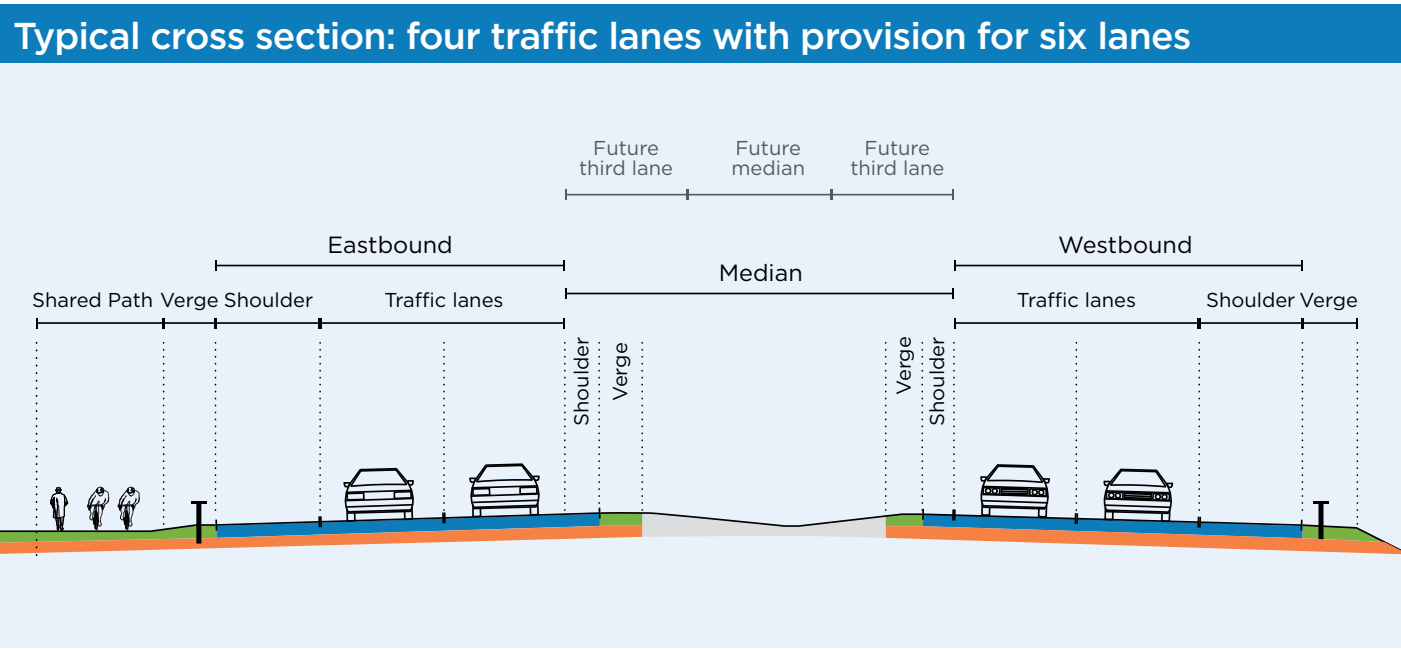
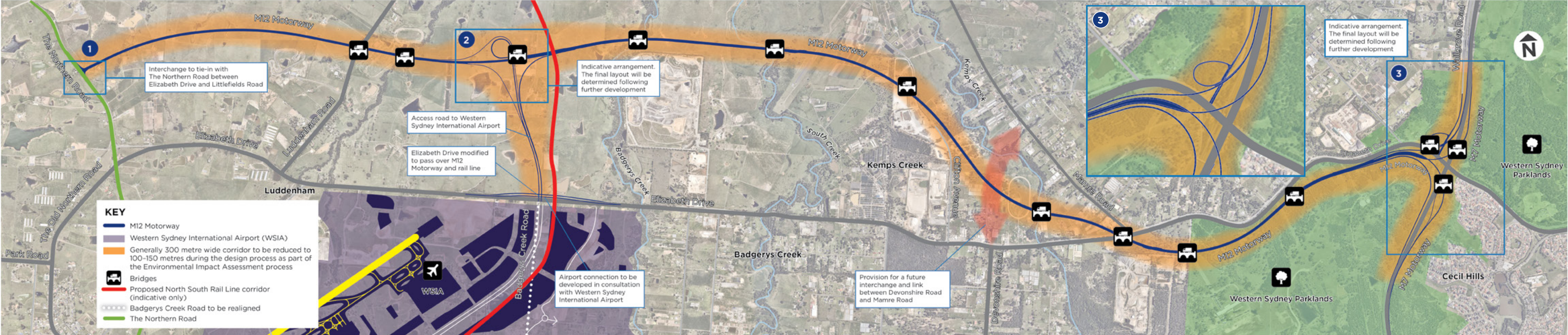
**WE
ARE
HERE**

2019 – 2020

Project approval

- Consider feedback from the community and Government agencies and prepare a submission report and Preferred Infrastructure Report responding to issues raised
- Submission and preferred infrastructure report sent to the NSW Department of Planning and Environment. The NSW Minister for Planning and Public Spaces and Federal Minister of the Environment will then consider the project for approval.

Proposed M12 Motorway



Aboriginal heritage investigations

We have:

- identified 15 registered Aboriginal heritage sites.
- recovered 1404 stone artefacts during excavations including a piece of ochre pencil that would have been used for ceremonial body painting and as a paint for drawings depicting their lifestyle.

Biodiversity investigations

Ecologists carried out flora and fauna surveys between May 2017 and October 2018. We identified a number native flora and fauna species within the M12 Motorway corridor including the Sydney Bush Pea, five species of microbat and the White Bellied Sea Eagle.



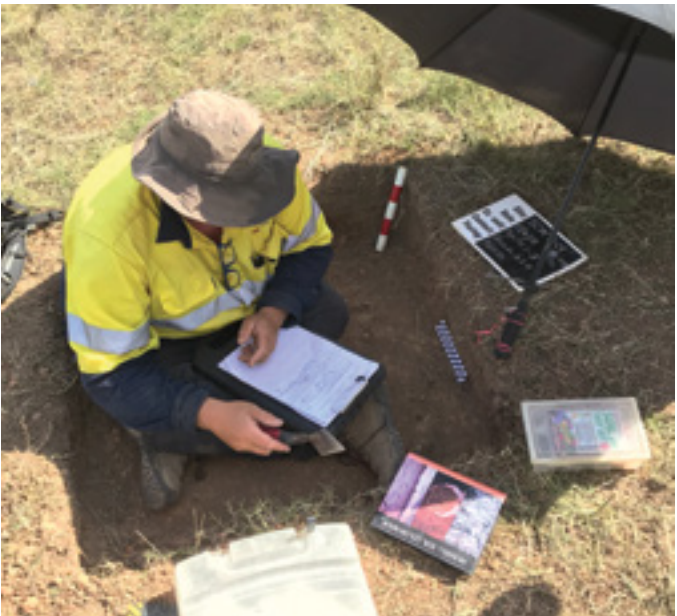
White Bellied Sea Eagle

Aboriginal and cultural heritage

An objective for the M12 Motorway project is to acknowledge the area's Aboriginal history and today's Aboriginal community that connects with the area.

An Aboriginal cultural interpretation of the M12 Motorway corridor is underway. This will inform the concept design to create a distinct identity that reflects and embraces Aboriginal and cultural heritage.

Acknowledging the area's indigenous history in this way strengthens the connection between the local Aboriginal community and the landscape. Interconnectedness of the land with stories, songs, dances and cultural practises is an important part of indigenous culture which will be reflected in the cultural interpretation.



Aboriginal heritage investigation

Property acquisition

A number of properties will be acquired for the M12 Motorway project. Roads and Maritime are in contact with all affected property owners and will continue to work with them as the project progresses.

More information about the property acquisition process is available at www.propertyacquisition.nsw.gov.au

Environmental Impact Statement

The M12 Motorway is considered State Significant Infrastructure and is being assessed under Division 5.2 of the *Environmental Planning and Assessment Act 1979*.

The Environmental Impact Statement (EIS) will examine all potential environmental and social impacts that may occur during construction and operation. Proposed mitigation measures to reduce impacts will be included in the EIS.

Roads and Maritime is currently developing the EIS for the M12 Motorway.

The EIS will be placed on public display for community and stakeholder feedback later in 2019.

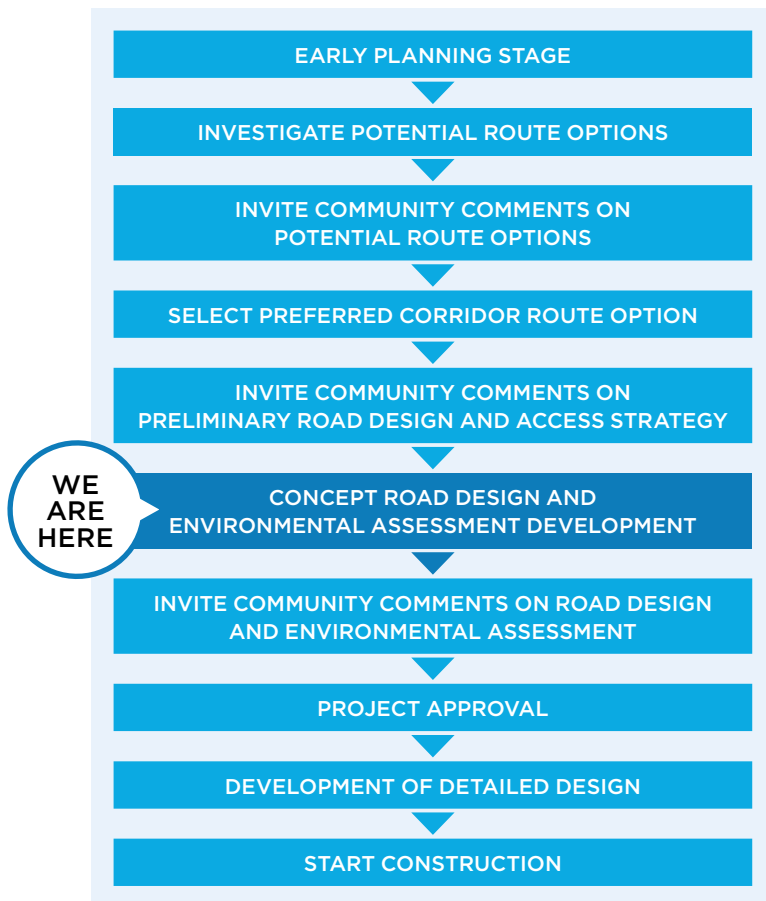
Key features

Key features of the M12 Motorway:

- an east-west 16 kilometre motorway between the M7 Motorway, Cecil Hills and The Northern Road, Luddenham
- a direct connection to Western Sydney International Airport
- a four lane motorway (with provision for up to six lanes) with a median to separate opposing traffic flows
- a new connection to The Northern Road with traffic lights
- a motorway-to-motorway interchange at the M7 Motorway
- provision for a future interchange connecting Mamre Road and Devonshire Road at the M12 Motorway.

Next steps

Roads and Maritime is developing the EIS in conjunction with key stakeholders. It will be on public display in the second half of 2019. Community members will be notified when the EIS goes on display so they can provide their feedback and comments. Details on how to provide formal submissions will be provided to make it easier for you to contribute to the process.



Contact us



1800 517 155



M12 Motorway,
Roads and Maritime Services,
PO Box 973, Parramatta NSW 2124



rms.nsw.gov.au/m12



m12motorway@rms.nsw.gov.au



131 450

If you need help understanding this information, please contact the Translating and Interpreting Service on 131 450 and ask them to call us on 1800 517 155.



June 2019
RMS.19.1271

Privacy Roads and Maritime Services ("RMS") is subject to the Privacy and Personal Information Protection Act 1998 ("PPIP Act") which requires that we comply with the Information Privacy Principles set out in the PPIP Act. All information in correspondence is collected for the sole purpose of assisting in the delivery of this project. The information received, including names and addresses of respondents, may be published in subsequent documents unless a clear indication is given in the correspondence that all or part of that information is not to be published. Otherwise RMS will only disclose your personal information, without your consent, if authorised by the law. Your personal information will be held by RMS at 27 Argyle Street, Parramatta. You have the right to access and correct the information if you believe that it is incorrect.