



Australian Government

BUILDING OUR FUTURE



M12 Motorway

Environmental Impact Statement exhibition period from 16 October

Community update
October 2019



Artist impression of the M12/M7 and Elizabeth Drive interchange

Roads and Maritime Services is proposing to build the M12 Motorway, a new 16 kilometre motorway between the M7 Motorway at Cecil Hills and The Northern Road at Luddenham. The motorway would connect the Western Sydney International Airport at Badgerys Creek to Sydney's motorway network and is expected to be opened to traffic in 2025 before the new airport opens. Motorway construction is proposed to start in 2022.

The motorway would provide increased road capacity, reduce congestion and improve travel times in the future. It would also improve the movement of freight in and through Western Sydney.



Key features

- An east-west 16 kilometre motorway between the M7 Motorway, Cecil Hills and The Northern Road, Luddenham.
- A motorway built for four lanes (with provision for up to six lanes) with a median to separate opposing traffic flows.
- A direct connection to Western Sydney International Airport.
- A new connection to The Northern Road with traffic lights.
- A motorway-to-motorway interchange at the M7 Motorway.
- Provision for a future interchange connecting Mamre Road and Devonshire Road at the M12 Motorway.

Environmental Impact Statement

The next major milestone for the M12 Motorway is the exhibition of the Environmental Impact Statement (EIS) which will pave the way for detailed design and construction.

The EIS exhibition period is an important opportunity for the community and key stakeholders to comment on the proposed motorway’s design and environmental and social impacts.

The EIS exhibition period runs from 16 October for a minimum of 28 calendar days. Information sessions and pop-up stalls will be held during the exhibition period giving the community an opportunity to talk directly to the project team. There is also an interactive online experience where you can read the EIS, do a simulated drive along the new motorway and compare before and after aerial images of sections of the proposed road.



4 Lanes
(up to 6 in future)



\$0 Toll free



Reduce
cost of congestion



Access
between Airport and M7

Key aspects of EIS




geotechnical
investigations

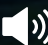


traffic modelling

Field investigations

 biodiversity

 engineering survey

 background noise monitoring



community and
business surveys



refined the
concept design



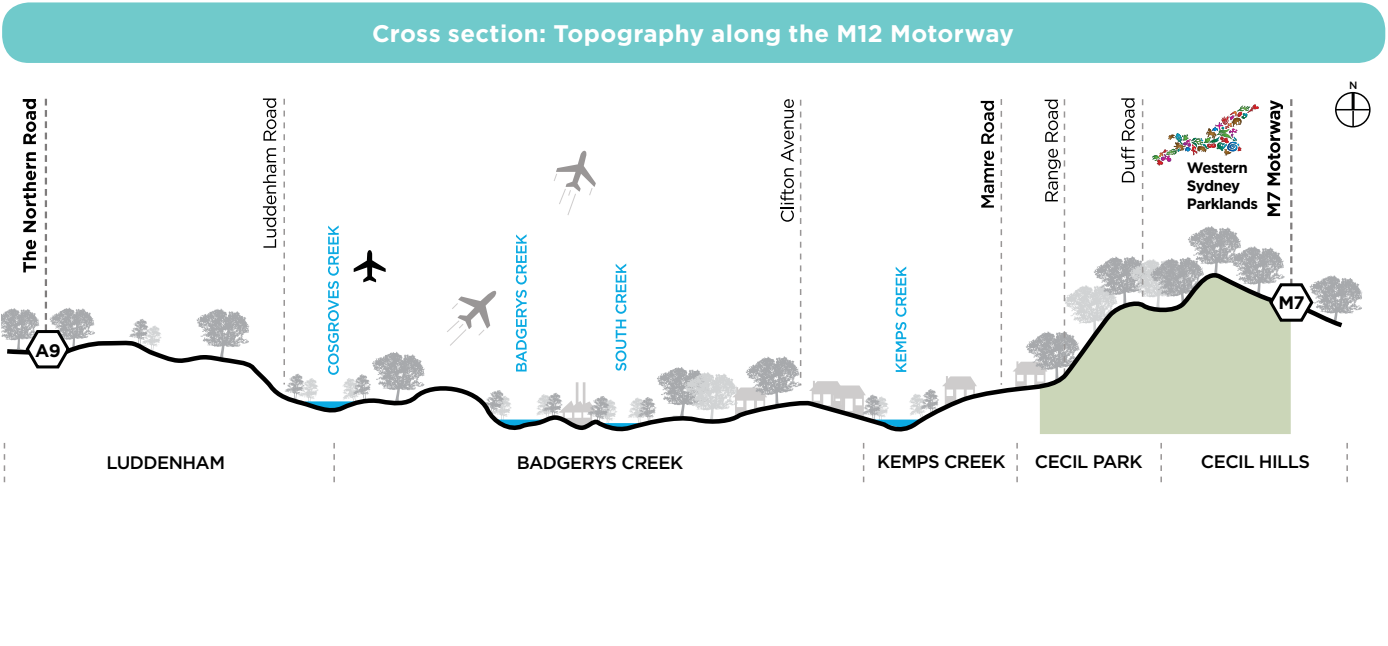
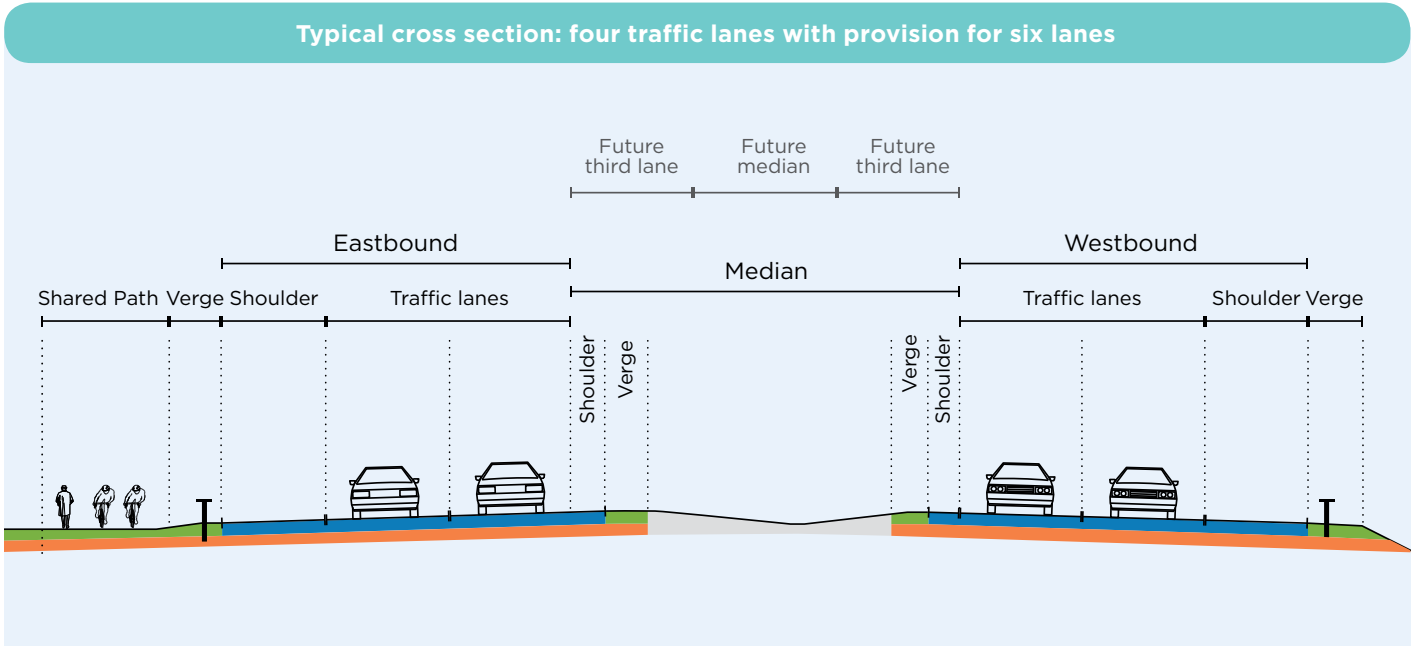
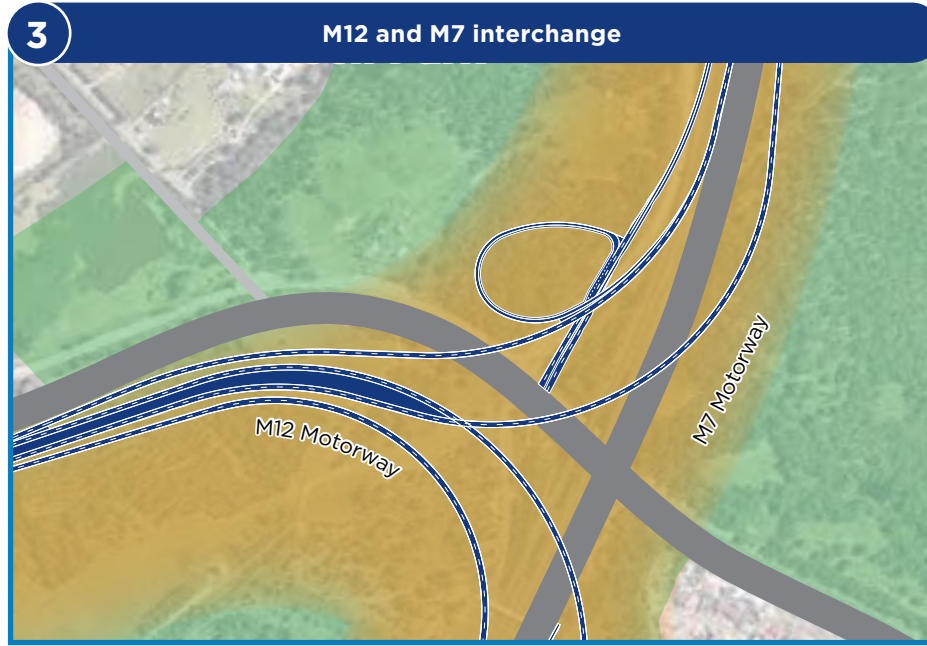
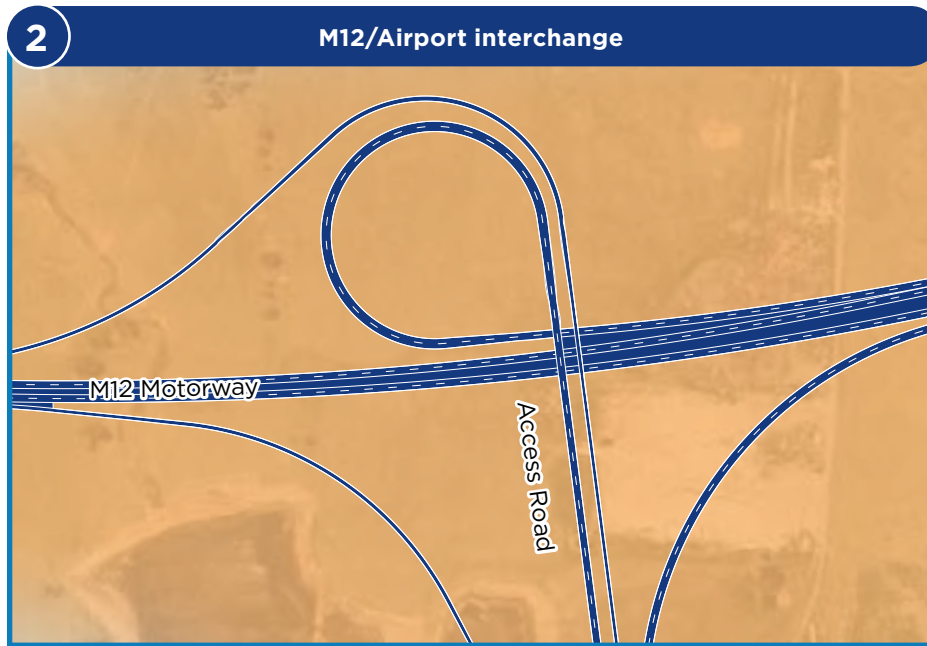
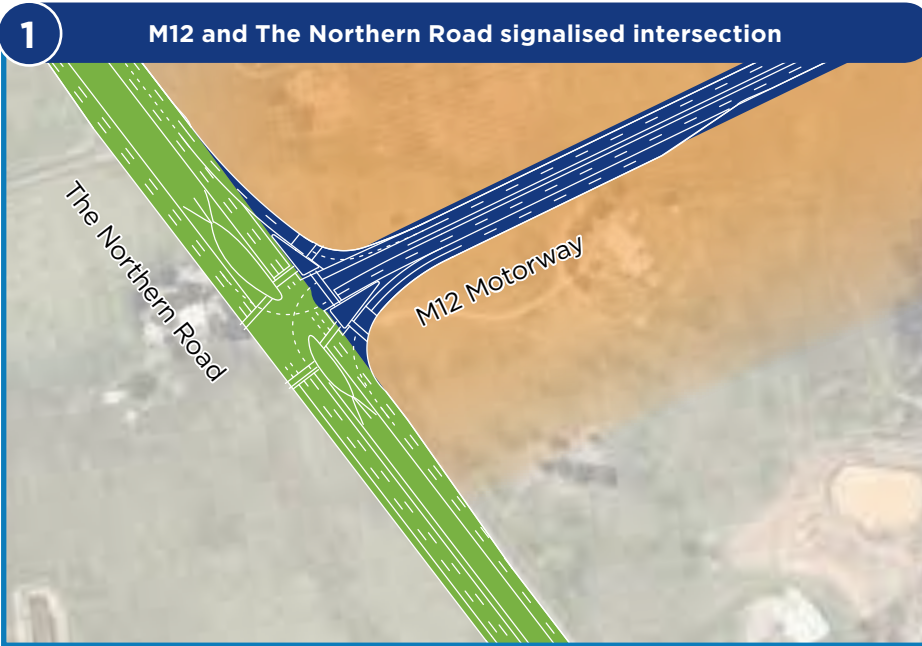
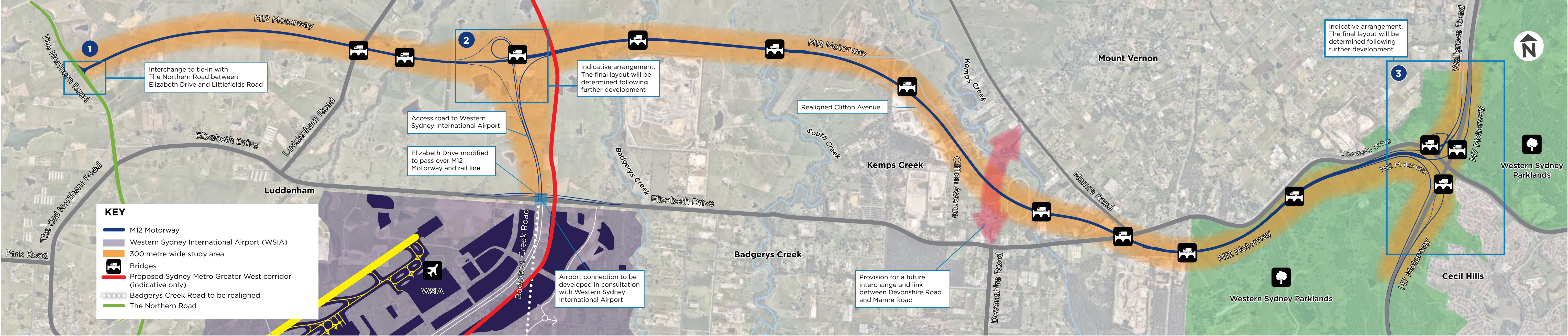
developing the
flood model

Aboriginal and cultural
heritage investigations



safer
design

Proposed M12 Motorway



Information sessions

Members of the project team will be available to discuss the EIS at the following times:

- **Thursday, 24 October – 5pm to 8pm**
Kemps Creek Public School,
100 Cross Street, Kemps Creek
- **Saturday, 26 October – 10am to 1pm**
Holy Family Primary School,
Lot 32 Willowdene Avenue, Luddenham
- **Saturday 2 November – 10am to 1pm**
Kemps Creek Sporting & Bowling Club
1490 Elizabeth Drive, Kemps Creek
- **Thursday, 7 November – 5pm to 8pm**
Holy Family Primary School,
Lot 32 Willowdene Avenue, Luddenham

To find out more about the EIS

Visit the Roads and Maritime project website <http://rms.nsw.gov.au/m12>, see us in person at one of our information sessions or visit a display location to view a copy of the EIS.



**Visit our interactive web
portal to find out more about the EIS**
www.rms.nsw.gov.au/m12

Make a submission

The Department of Planning, Industry and Environment (DPIE) will place the M12 Motorway EIS on public exhibition from 16 October to 18 November. To make a submission go to: <https://www.planningportal.nsw.gov.au/major-projects/project/10226>.

Submissions must be received by 11.59pm on **Friday 18 November 2019**.

Contact us

If you have questions or would like more information, contact the project team:



1800 517 155



rms.nsw.gov.au/m12



m12motorway@rms.nsw.gov.au



If you need help understanding this information, please contact the Translating and Interpreting Service on 131 450 and ask them to call us on 1800 517 155.

Display locations

The EIS will be on display at the following locations from 16 October:

- Roads and Maritime Services office,
20–44 Ennis Road, Milsons Point
- Department of Planning, Industry and Environment, 320 Pitt Street, Sydney
- Nature Conservation Council,
14/338 Pitt Street, Sydney
- Western Sydney Airport Experience Centre,
Eaton Road, Luddenham
- Service NSW Centres (electronic copies available only)
- Council offices:
 - Fairfield City Council: 86 Avoca Road, Wakeley
 - Liverpool City Council:
33 Moore Street, Liverpool
 - Penrith City Council:
Civic Centre 601 High Street, Penrith
 - Camden Council: 70 Central Ave, Oran Park
- Libraries:
 - St Clair Library: Shop 12, St Clair Shopping Centre, Bennett Road and Endeavour Avenue, St Clair
 - Wetherill Park Library:
561–583 Polding Street, Wetherill Park
 - Carnes Hill Library:
600 Kurrajong Road, Carnes Hill



Next steps



Wylde Mountain Bike Trail

New design of the Wylde Mountain Bike Trail is currently underway.



Image courtesy of Western Sydney Parklands Trust



Artist impression, shared path view north-east at the Airport interchange