



Transport for NSW

Beaches Link and Gore Hill Freeway Connection

Environmental Impact Statement



Artist's impression of new and improved open space and recreation facilities at Balgowlah. Indicative only.

Balgowlah temporary construction support sites

This fact sheet outlines the key construction activities, timelines and the potential temporary construction impacts, and at the completion, the operational impacts in your local area as outlined in the EIS. We encourage you to visit our interactive portal for more information, our interactive map, videos and to view the full EIS chapters.

We will be setting up a temporary construction support site at Balgowlah Golf Course and Dudley Street. This will be a tunnel support site and surface work support site and project management site.

We will also be setting up a smaller temporary site at Kitchener Street to support construction work along Burnt Bridge Creek Deviation. The key

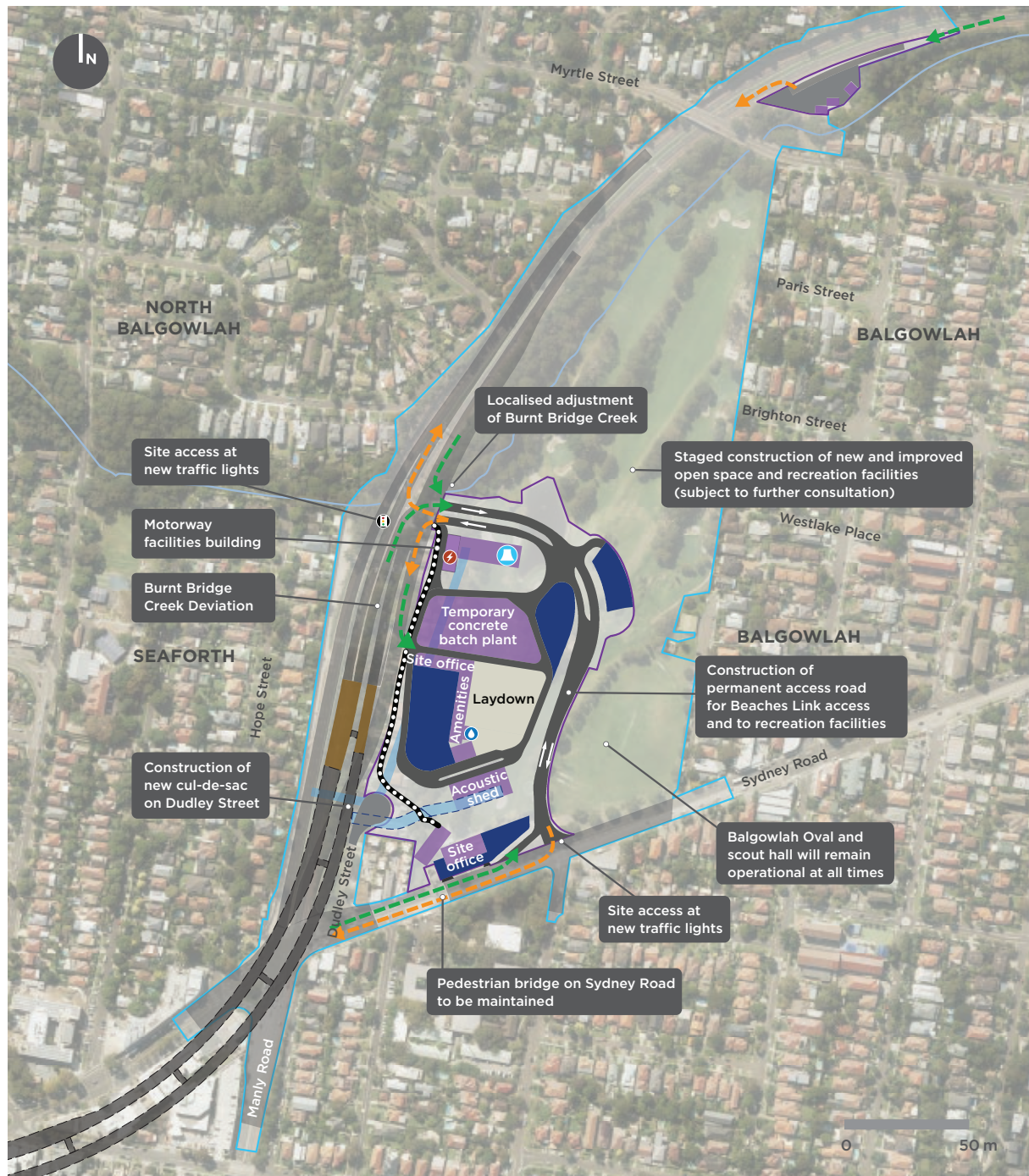
site features of this site will include site offices, staff amenities, car parking for staff, laydown facilities, and space for storage of plant, materials and equipment.

For more information about the Kitchener Street temporary site, please visit our interactive portal:

nswroads.work/blportal

The Beaches Link and Gore Hill Freeway Connection Environmental Impact Statement (EIS) **is now on public exhibition until midnight Monday 1 March 2021.**

Balgowlah Golf Course temporary construction support site



Legend

Construction footprint	Surface work	Car park	Ventilation outlet
Temporary construction support site	Cut and cover and trough structure	Temporary site access	Substation
Tunnel (underground)	Access decline (underground)	Site access - in	Wastewater treatment plant
Construction site buildings	Ventilation tunnel	Site access - out	Traffic lights
			Indicative temporary noise barrier

Balgowlah

Balgowlah Golf Course

We will be setting up a temporary construction support site at Balgowlah Golf Course and Dudley Street. This will be a tunnel support site and surface work support site and project management site.

Our key activities include:

- setting up the site by removing existing structures and vegetation, where required
- building and operating temporary construction facilities, including an acoustic shed, temporary noise barriers, wastewater treatment facility, air intake, staff offices and amenities, car parking and a concrete batch plant
- localised adjustment of a small section of Burnt Bridge Creek for road widening and drainage work
- excavating tunnel access
- tunnelling, including ramp and main tunnels toward Middle Harbour
- treatment of wastewater from tunnelling activities
- storing, handling and transporting materials, including tunnel spoil
- support for tunnel fitout and finishing work
- utility work
- traffic staging to enable us to keep traffic moving while we carry out work within Burnt Bridge Creek Deviation
- support for cut and cover work, trough work, surface work and road widening work
- construction of a new access road between Burnt Bridge Creek Deviation and Sydney Road to provide access to the tunnel and the future new and improved open space and recreation facilities
- construction of the operational motorway facilities and ventilation outlet
- additional support for construction of the immersed tube tunnels
- construction of the new active transport links
- testing and commissioning of the tunnel
- building new and improved open space and recreation facilities, including parking
- final landscaping and rehabilitating the site.

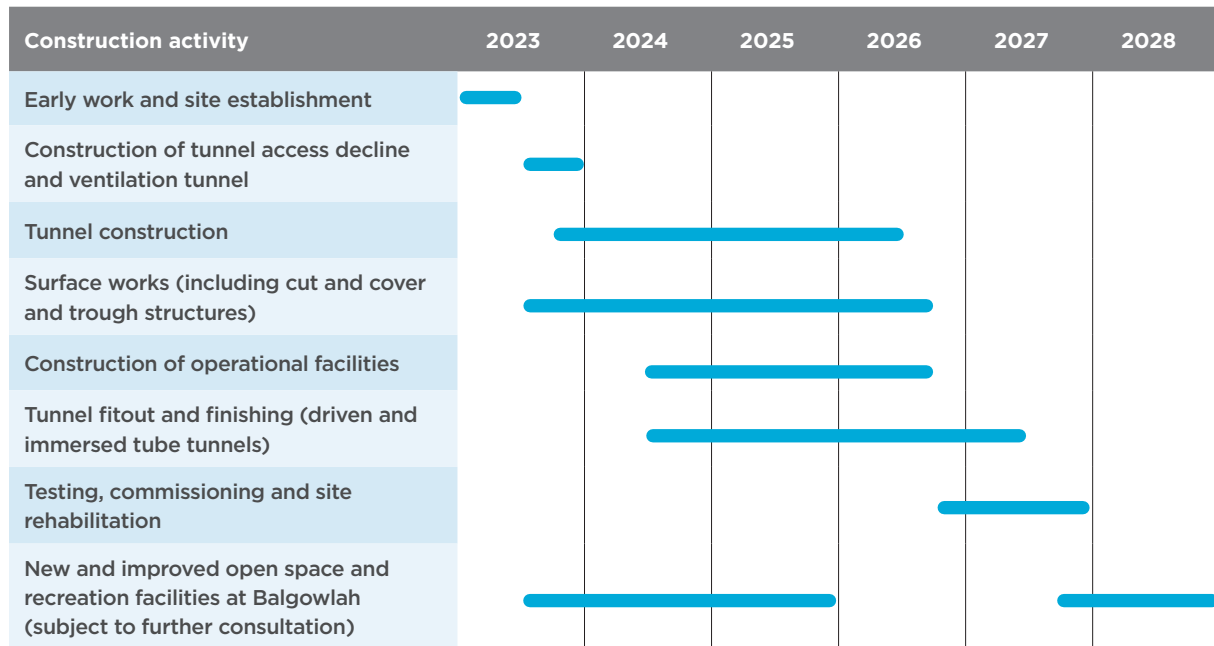


Design changes at Balgowlah

We have worked with the community on a number of alternatives to connect Beaches Link with Sydney Road. We have redesigned the permanent access road to reduce its length, area, and impacts, while still providing access to the new public open space and recreational facilities.

The proposed tunnel portal location at Burnt Bridge Creek Deviation has been shifted further to the south. This enables us to reduce traffic staging works on Burnt Bridge Creek Deviation, reduce our impacts on Burnt Bridge Creek and eliminate the need to replace the existing Kitchener Street Bridge.

Balgowlah Golf Course temporary construction support site indicative construction program



Duration



You may see us in this area for up to six years as we set up, carry out our construction work, then demobilise the site and build the final recreation facilities.

The construction peak at this site will be when we are tunnelling and carrying out surface works and will be up to three years.

Hours of work



We will be tunnelling up to 24 hours a day, seven days a week. Once we are tunnelling, the majority of the work will take place underground and activity on the surface will reduce. Based on our planned tunnelling rate and depth we expect the impact from tunnelling to be minimal for residents as we will only be excavating directly under each property for about one week, and will generally be quite deep.

When tunnelling, our work will be as deep as 43 metres (12 storeys) at Balgowlah. Tunnel depths are indicative only and subject to further refinement as the project design develops.

The majority of the tunnelling work on the surface at this site takes place inside the acoustic shed, which manages the potential impacts of noise, dust and light spill. These sheds are closed at night to further reduce noise. There may be occasional deliveries and some light vehicle movements outside of standard construction hours.

General site activities and spoil transport will only take place during standard construction hours. Surface work in the area will need occasional night or out of hours work. For any work outside the standard construction hours, the community will be notified in advance.

Traffic/vehicle movements



Access to site will be via Burnt Bridge Creek Deviation and Sydney Road.

At our construction peak, there will be around 495 heavy vehicle movements and 1195 light vehicle movements per day (a vehicle travelling in and out of the site is counted as two movements). This will increase traffic in the area by 2.5 per cent during peak construction. Overall, this is a small increase to current traffic volumes.



Artist's impression of sporting facilities at Balgowlah

Your new open space in Balgowlah



We will return an area equivalent to around 90 per cent of the current open space as new and improved public open space and recreation facilities for the community.

We are working collaboratively with the Northern Beaches Council and plan to progressively deliver some of the recreational precinct for you to use before construction is complete.

We are committed to working with you to understand your views, so we can provide new and improved public open space and recreation facilities for everyone to enjoy.

How you can be involved

We will have a dedicated consultation period to give you an opportunity to have your say on the final layout of the sporting and recreational facilities. This consultation will be separate to the consultation for the Beaches Link and Gore Hill Freeway Connection EIS.

This consultation will be delivered in collaboration with Northern Beaches Council. We will start this process in 2021 once the EIS public exhibition has closed and well in advance of construction starting.

As part of this consultation process, we will establish a community reference group, with representative stakeholder groups and the community, to support us and the Northern Beaches Council with the development of this important open space in Balgowlah. More details about the community reference group will be communicated at a later date.

How to make a submission

How to make an online submission

1. Visit DPIE's Major Projects website at **planningportal.nsw.gov.au/major-projects/projects/on-exhibition**
2. Create a user account by clicking the 'Sign In' icon in the top right of the homepage or under the 'Services' tab and then click the 'Have Your Say' link
3. When you are logged in, find the Beaches Link and Gore Hill Freeway Connection project and click the 'Make a Submission' icon.

How to make a hard copy submission

You can also submit a hard copy of your submission. If you want DPIE to delete your personal information before publication, please make this clear at the top of your letter.

You need to include:

1. your name and address, at the top of the letter only
2. the name of the application and application number: SSI_8862
3. a statement on whether you support or object to the proposal
4. the reasons why you support or object to the proposal
5. a declaration of any reportable political donations made in the previous two years.

You can post your submission to:

Attention: Director, Transport Assessments
Planning & Assessment, Department of Planning
Industry and Environment
Locked Bag 5022
Parramatta NSW 2124

Donations and Gift Disclosure

Anyone lodging submissions must declare reportable political donations made in the previous two years. To find out what is reportable, and for a disclosure form, go to planning.nsw.gov.au/donationsandgiftdisclosure or phone 1300 305 695 for a copy.

Privacy

Before making your submission, please read DPIE's Privacy Statement at planning.nsw.gov.au/privacy or phone 1300 305 695 for a copy.

DPIE will publish your submission on its website in accordance with their Privacy Statement.

Submissions must be received by DPIE before midnight Monday 1 March 2021.



nswroads.work/blportal



1800 931 189



whtbl@transport.nsw.gov.au



Customer feedback
Transport for NSW, Locked Bag 928
North Sydney NSW 2059

Visit our interactive web portal

Read the EIS, find out more or ask our team a question.



nswroads.work/blportal

Our phone line is monitored 24 hours when work is taking place.



131 450

If you need help understanding this information, please contact the Translating and Interpreting Service on **131 450** and ask them to call us on **1800 931 189**.

Privacy Transport for NSW is collecting your personal information in connection with Beaches Link and Gore Hill Freeway Connection ("the Project"). In addition to collecting your name and contact details we may collect other information such as your submissions and other communications with us. We will retain and use this information for consultation purposes, including communications and analysis in connection with the Project. We will not disclose your personal information to third parties unless authorised by law and if we include your submissions in any public report we will not identify you. Providing your personal information is voluntary but if you do not provide it we may not include you on our stakeholder database and you might miss further consultation opportunities. Your personal information will be held by us and you can contact us to access or correct it. Please write to us at either whtbl@transport.nsw.gov.au or Transport for NSW, Locked Bag 928, North Sydney NSW 2059.