



Transport for NSW

# Beaches Link and Gore Hill Freeway Connection

Environmental Impact Statement

## Seaforth and Killarney Heights temporary construction support sites

This fact sheet outlines the key construction activities, timelines and the potential temporary construction impacts in your local area as outlined in the EIS. We encourage you to visit our interactive portal for more information, our interactive map, videos and to view the full EIS chapters.

### Seaforth

#### Wakehurst Parkway South

We will be setting up a temporary construction support site along Wakehurst Parkway to support the upgrade of Wakehurst Parkway, the construction of the cut and cover structure, trough and motorway facilities, and provide additional support for tunnelling work at the Wakehurst Parkway east construction support site.

#### Our key activities include:

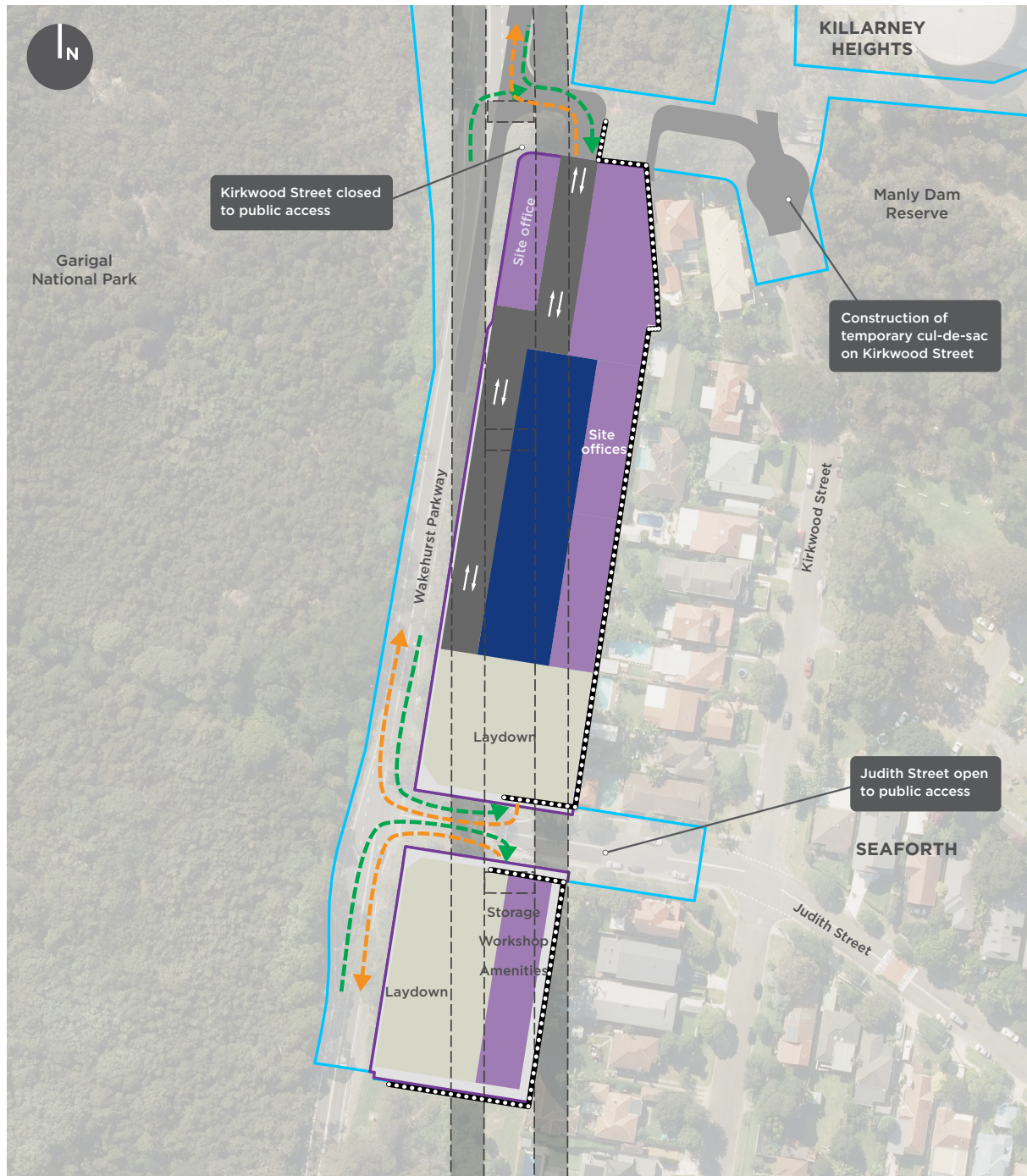
- setting up the site by removing existing vegetation, where required
- building and operating temporary construction facilities, including workshops, staff offices, amenities and car parking for staff
- providing support for the upgrade of Wakehurst Parkway and the construction of the cut and cover tunnel and trough and motorway facilities at Wakehurst Parkway
- providing additional office support for tunnelling work at the Wakehurst Parkway East construction support site.

The Beaches Link and Gore Hill Freeway Connection Environmental Impact Statement (EIS) is now on public exhibition until midnight Monday 1 March 2021.

#### Wakehurst Parkway South temporary construction support site indicative construction program

Construction activity	2023	2024	2025	2026	2027
Early works and site establishment					
Support surface road work at Wakehurst Parkway					
Cut and cover and trough support					
Motorway facilities support					
Testing, commissioning and site rehabilitation					

## Wakehurst Parkway South temporary construction support site



### Legend

Construction footprint	Construction site buildings	Site access - in	Indicative temporary noise barrier
Temporary construction support site	Tunnel (underground)	Site access - out	
Surface Work	Temporary site access	Car park	

#### Duration



You may see us in this area for up to five years as we setup, carry out our construction work, then demobilise the site and rehabilitate it for future use.

The construction peak at this site will be when we are carrying out surface work, and building the motorway facilities, cut and cover and trough works and will be up to two and a half years.

#### Hours of work



Our general site activities including most surface work will be carried out during standard construction hours.

There may be occasional activities, such as traffic staging and switches on the Wakehurst Parkway and intersection modifications during site establishment, which will occur outside of standard hours.

For any work outside the standard construction hours, the community will be notified in advance.

#### Traffic/vehicle movements



Access to site will be via Wakehurst Parkway.

At our construction peak, there will be around 15 heavy vehicle movements and 285 light vehicle movements per day (a vehicle travelling in and out of the site is counted as two movements). The combined activity for all Wakehurst Parkway temporary sites will increase traffic in the area by 4 per cent during peak construction. Overall, this is a small increase to current traffic volumes.

## Killarney Heights

### Wakehurst Parkway east

We will be setting up a temporary construction support site at Wakehurst Parkway on land within Sydney Water's Bantry Bay Reservoir site, west of the Wakehurst Parkway Golf Course.

This site will support the construction of the tunnel ramps between Wakehurst Parkway and the underground connection to the main tunnel.

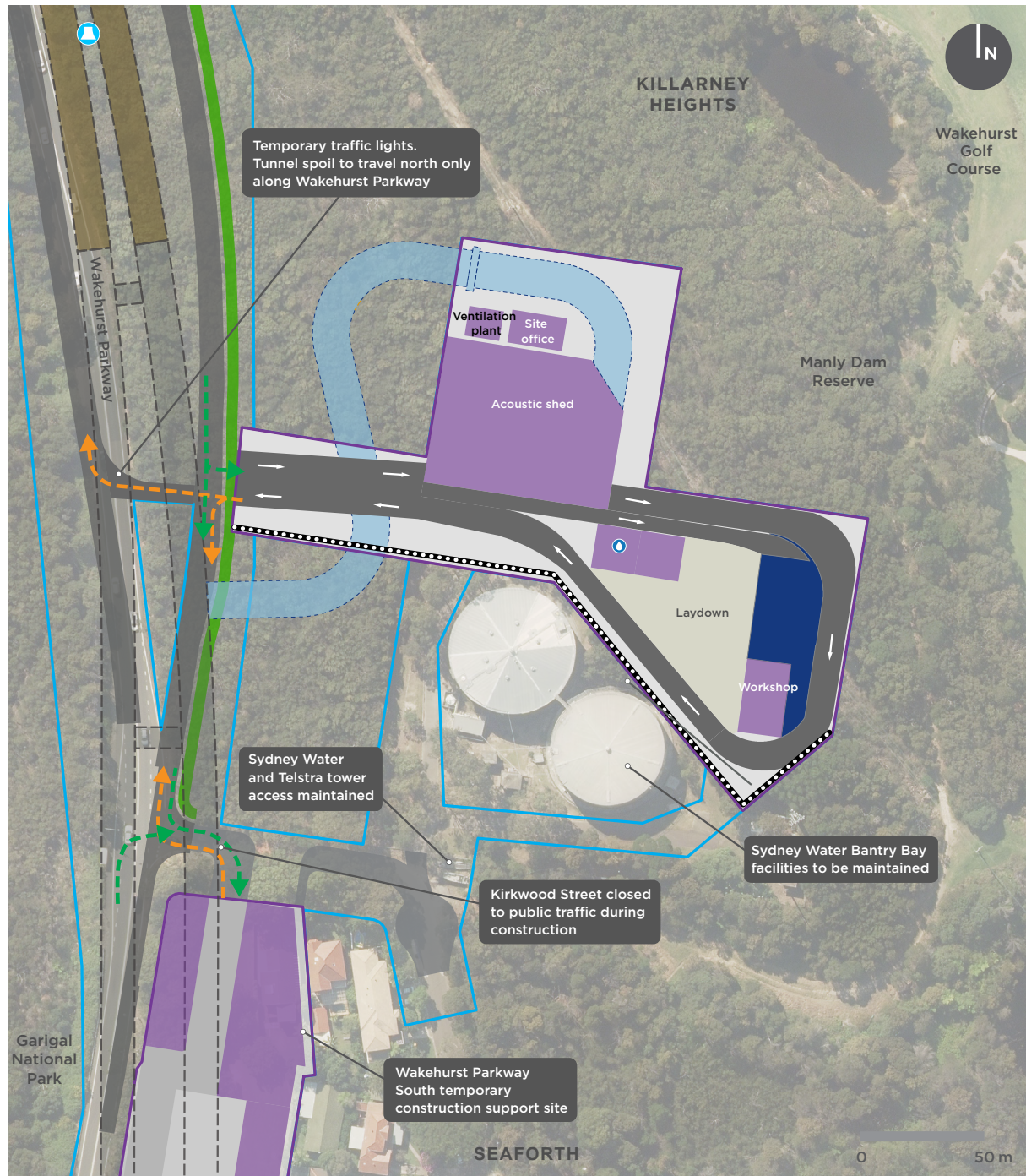
#### Our key activities include:

- setting up the site, including carrying out earthworks
- building and operating of temporary construction facilities, including an acoustic shed, temporary noise barrier, wastewater treatment facility, air intake, staff offices and amenities, and car parking
- excavating the temporary tunnel access
- tunnelling, including joining the Wakehurst Parkway tunnel ramps to the main tunnel
- treatment of wastewater from tunnelling activities at the onsite treatment facility
- utility work
- storing, handling and transporting materials, including tunnel spoil
- tunnel fitout and finishing work
- testing and commissioning of the tunnel
- rehabilitating the site.

#### Wakehurst Parkway East temporary construction support site indicative construction program

Construction activity	2023	2024	2025	2026	2027
Early work and site establishment					
Construction of tunnel access decline					
Tunnel construction					
Tunnel fitout					
Testing, commissioning and site rehabilitation					

## Wakehurst Parkway East temporary construction support site



### Legend

- |                                     |                                     |                                    |
|-------------------------------------|-------------------------------------|------------------------------------|
| Construction footprint              | Beaches Link driven tunnel          | Indicative temporary noise barrier |
| Temporary construction support site | Temporary site access               | Site access - in                   |
| Construction site buildings         | Surface work                        | Site access - out                  |
| Carpark                             | Cut and cover                       | Wastewater treatment plant         |
|                                     | Pedestrian / active transport links | Ventilation outlet                 |
|                                     | Access decline (underground)        |                                    |

### Duration



You may see us in this area for about four and a half years as we setup, carry out our construction work, then demobilise the site and rehabilitate it for future use. The construction peak at this site will be when we are tunnelling and will be up to two and a half years.

### Hours of work



We will be tunnelling up to 24 hours a day, seven days a week. Once we are tunnelling, the majority of the work will take place underground and activity on the surface will reduce. Based on our planned tunnelling rate and depth we expect the impact from tunnelling to be minimal for residents as we will only be excavating directly under each property for about one week, and will generally be quite deep.

When tunnelling, our work will be as deep as 87 metres (25 storeys) at Seaforth Bluff. Tunnel depths are indicative only and subject to further refinement as the project design develops.

The majority of the tunnelling work on the surface at this site takes place inside the acoustic shed, which manages the potential impacts of noise, dust and light spill. These sheds are closed at night to further reduce noise. There may be occasional deliveries and some light vehicle movements outside of standard construction hours.

General site activities and spoil transport will only take place during standard construction hours.

For any work outside the standard construction hours, the community will be notified in advance.

### Traffic/vehicle movements



Access to site will be via a new temporary connection to Wakehurst Parkway. At our construction peak, there will be around 275 heavy vehicle movements and around 305 light vehicle movements per day (a vehicle travelling in and out of the site is counted as two movements). The combined activity for all Wakehurst Parkway temporary sites will increase traffic in the area by 4 per cent during peak construction. Overall, this is a small increase to current traffic volumes.

### Construction traffic changes



Your previous feedback has helped us refine how our construction vehicles will access the site.

Spoil trucks will be required to travel northbound only on Wakehurst Parkway to ensure local residential areas to the south including the Seaforth shopping area are not impacted by trucks hauling spoil material.

Based on your previous feedback, we are proposing to keep the intersection of Wakehurst Parkway and Judith Street open and close the intersection of Wakehurst Parkway and Kirkwood Street for the duration of construction.

### Final form



After construction, the portion of the site not required by Sydney Water for ongoing operations will be handed over to the Manly Warringah War Memorial Park Reserve Trust for the community to enjoy.

## How to make a submission

### How to make an online submission

1. Visit DPIE's Major Projects website at [planningportal.nsw.gov.au/major-projects](http://planningportal.nsw.gov.au/major-projects)
2. Create a user account by clicking the 'Sign In' icon in the top right of the homepage or under the 'Services' tab and then click the 'Have Your Say' link
3. When you are logged in, find the Beaches Link and Gore Hill Freeway Connection project and click the 'Make a Submission' icon.

### How to make a hard copy submission

You can also submit a hard copy of your submission. If you want DPIE to delete your personal information before publication, please make this clear at the top of your letter.

#### You need to include:

1. your name and address, at the top of the letter only
2. the name of the application and application number: SSI\_8862
3. a statement on whether you support or object to the proposal
4. the reasons why you support or object to the proposal
5. a declaration of any reportable political donations made in the previous two years.

#### You can post your submission to:

Attention: Director, Transport Assessments  
Planning & Assessment, Department of Planning  
Industry and Environment  
Locked Bag 5022  
Parramatta NSW 2124

### Donations and Gift Disclosure

Anyone lodging submissions must declare reportable political donations made in the previous two years. To find out what is reportable, and for a disclosure form, go to [planning.nsw.gov.au/donationsandgiftdisclosure](http://planning.nsw.gov.au/donationsandgiftdisclosure) or phone 1300 305 695 for a copy.

### Privacy

Before making your submission, please read DPIE's Privacy Statement at [planning.nsw.gov.au/privacy](http://planning.nsw.gov.au/privacy) or phone 1300 305 695 for a copy.

DPIE will publish your submission on its website in accordance with their Privacy Statement.

**Submissions must be received by  
DPIE before midnight Monday 1  
March 2021.**



[nswroads.work/blportal](http://nswroads.work/blportal)



1800 931 189



[whtbl@transport.nsw.gov.au](mailto:whtbl@transport.nsw.gov.au)



**Customer feedback**  
Transport for NSW, Locked Bag 928  
North Sydney NSW 2059

Visit our interactive web portal  
Read the EIS, find out more or ask our  
team a question.



[nswroads.work/blportal](http://nswroads.work/blportal)

Our phone line is monitored 24 hours  
when work is taking place.



131 450

### Translating and Interpreting Service

If you need an interpreter, please call the Translating and Interpreting Service (TIS National) on **131 450** and ask them to telephone Transport for NSW on **1800 931 189**.

#### Chinese (simplified)

若您需要口译员, 请拨打 **131 450** 致电翻译与口译服务处 (TIS National), 并要求他们转拨 **1800 931 189** 致电 Transport for NSW。

#### Italian

Se avete bisogno di un interprete, chiamate il servizio traduttori e interpreti (TIS National) al numero **131 450** e chiedete di telefonare a Transport for NSW al numero **1800 931 189**.

#### Portuguese

Se necessitar de um(a) Intérprete, por favor, ligue para o Serviço de Tradução e Interpretação (TIS National), através de **131 450** e peça o telefone do Transport for NSW, através de **1800 931 189**.

Privacy Transport for NSW is collecting your personal information in connection with Beaches Link and Gore Hill Freeway Connection ("the Project"). In addition to collecting your name and contact details we may collect other information such as your submissions and other communications with us. We will retain and use this information for consultation purposes, including communications and analysis in connection with the Project. We will not disclose your personal information to third parties unless authorised by law and if we include your submissions in any public report we will not identify you. Providing your personal information is voluntary but if you do not provide it we may not include you on our stakeholder database and you might miss further consultation opportunities. Your personal information will be held by us and you can contact us to access or correct it. Please write to us at either [whtbl@transport.nsw.gov.au](mailto:whtbl@transport.nsw.gov.au) or Transport for NSW, Locked Bag 928, North Sydney NSW 2059.