



Transport for NSW

Beaches Link and Gore Hill Freeway Connection

Environmental Impact Statement

Frenchs Forest temporary construction support site

This fact sheet outlines the key construction activities, timelines and the potential temporary construction impacts in your local area as outlined in the EIS. We encourage you to visit our interactive portal for more information, our interactive map, videos and to view the full EIS chapters.

We will be setting up a temporary construction support site on Wakehurst Parkway at Frenchs Forest to support surface road work, intersection work and to build a permanent tunnel support facility. This site was recently used as a construction site for the Northern Beaches Hospital road upgrade.

Any areas that have been rehabilitated and returned to the community from the road upgrade project will not be used for Beaches Link. The rehabilitated area will be fenced off and protected from our work.

Our key activities include:

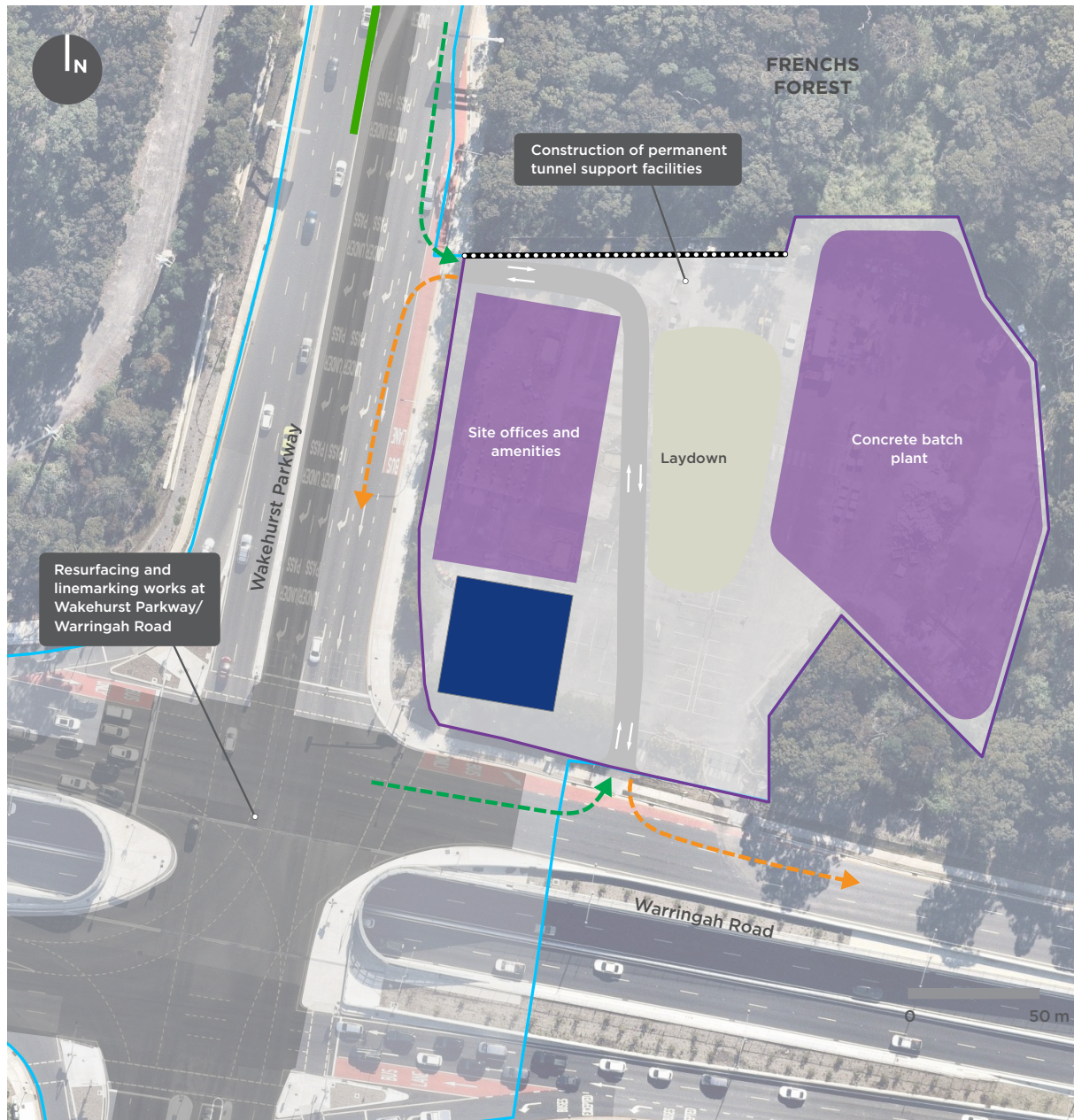
- building and operating the temporary construction facilities, including a temporary noise barrier, staff offices and amenities, car parking and concrete batch plant
- supporting construction of the Wakehurst Parkway surface road work, minor intersection work at Wakehurst Parkway/Warringah Road and Wakehurst Parkway/Frenchs Forest Road East and construction of the permanent tunnel support facilities.

The Beaches Link and Gore Hill Freeway Connection Environmental Impact Statement (EIS) **is now on public exhibition until midnight Monday 1 March 2021.**



Wakehurst Parkway

Wakehurst Parkway North temporary construction support site



Legend





	Construction footprint		Construction site buildings		Site access - in		Indicative temporary noise barrier
	Temporary construction support site		Carpark		Site access - out		Pedestrian B-Line bus access
	Surface work		Temporary site access				

Protecting revegetation

The same site was used as the main construction support site for the Northern Beaches Hospital road upgrade project, which was completed in August 2020. Revegetation work was carried out within the Northern Beaches Hospital road upgrade project's main construction support site as part of decommissioning. This included planting with species consistent with the Duffys Forest endangered ecological community within the eastern section of the decommissioned construction support site.

During site establishment of the Wakehurst Parkway North temporary construction support site, this revegetated area will remain fenced off and protected from disturbance. Due to the timing of this recent revegetation work, the current site layout of the Wakehurst Parkway North temporary site does not show the revegetation area. During further design development and construction planning, the temporary site layout will be refined to show the revegetation area, and ensure it is avoided and protected during construction.

Wakehurst Parkway North temporary construction support site indicative construction program

Construction activity	2023	2024	2025	2026	2027
Early work and site establishment					
Surface road works					
Construction of operational facilities					
Testing, commissioning and site rehabilitation					

Duration



You may see us in this area for up to five years as we setup, carry out our construction work, then demobilise the site and rehabilitate it for future use.

The construction peak at this site will be when we are carrying out surface road works and will be up to four years.

Hours of work



Our general site activities will be carried out during standard construction hours.

There may be occasional night staging works to support the upgrade of Wakehurst Parkway between Seaforth and Warringah Road at Frenchs Forest. Occasional night time deliveries to the site may also be required.

For any work outside the standard construction hours, the community will be notified in advance.

Traffic/vehicle movements



Access to site will be via Wakehurst Parkway and Warringah Road.

At our construction peak, there will be around 95 heavy vehicle movements and 180 light vehicle movements per day (a vehicle travelling in and out of the site is counted as two movements). The combined activity for all Wakehurst Parkway temporary sites will increase traffic in the area by 4 per cent during peak construction. Overall, this is a small increase to current traffic volumes.

How to make a submission

How to make an online submission

1. Visit DPIE's Major Projects website at **planningportal.nsw.gov.au/major-projects**
2. Create a user account by clicking the 'Sign In' icon in the top right of the homepage or under the 'Services' tab and then click the 'Have Your Say' link
3. When you are logged in, find the Beaches Link and Gore Hill Freeway Connection project and click the 'Make a Submission' icon.

How to make a hard copy submission

You can also submit a hard copy of your submission. If you want DPIE to delete your personal information before publication, please make this clear at the top of your letter.

You need to include:

1. your name and address, at the top of the letter only
2. the name of the application and application number: SSI_8862
3. a statement on whether you support or object to the proposal
4. the reasons why you support or object to the proposal
5. a declaration of any reportable political donations made in the previous two years.

You can post your submission to:

Attention: Director, Transport Assessments
Planning & Assessment, Department of Planning
Industry and Environment
Locked Bag 5022
Parramatta NSW 2124

Donations and Gift Disclosure

Anyone lodging submissions must declare reportable political donations made in the previous two years. To find out what is reportable, and for a disclosure form, go to planning.nsw.gov.au/donationsandgiftdisclosure or phone 1300 305 695 for a copy.

Privacy

Before making your submission, please read DPIE's Privacy Statement at planning.nsw.gov.au/privacy or phone 1300 305 695 for a copy.

DPIE will publish your submission on its website in accordance with their Privacy Statement.

**Submissions must be received by
DPIE before midnight Monday 1
March 2021.**



nswroads.work/blportal



1800 931 189



whtbl@transport.nsw.gov.au



**Customer feedback
Transport for NSW, Locked Bag 928
North Sydney NSW 2059**

**Visit our interactive web portal
Read the EIS, find out more or ask our
team a question.**



nswroads.work/blportal

**Our phone line is monitored 24 hours
when work is taking place.**



Translating and Interpreting Service

If you need an interpreter, please call the Translating and Interpreting Service (TIS National) on **131 450** and ask them to telephone Transport for NSW on **1800 931 189**.

Chinese (simplified)

若您需要口译员, 请拨打 **131 450** 致电翻译与口译服务处 (TIS National), 并要求他们转拨 **1800 931 189** 致电 Transport for NSW。

Italian

Se avete bisogno di un interprete, chiamate il servizio traduttori e interpreti (TIS National) al numero **131 450** e chiedete di telefonare a Transport for NSW al numero **1800 931 189**.

Portuguese

Se necessitar de um(a) Intérprete, por favor, ligue para o Serviço de Tradução e Interpretação (TIS National), através de **131 450** e peça o telefone do Transport for NSW, através de **1800 931 189**.

Privacy Transport for NSW is collecting your personal information in connection with Beaches Link and Gore Hill Freeway Connection ("the Project"). In addition to collecting your name and contact details we may collect other information such as your submissions and other communications with us. We will retain and use this information for consultation purposes, including communications and analysis in connection with the Project. We will not disclose your personal information to third parties unless authorised by law and if we include your submissions in any public report we will not identify you. Providing your personal information is voluntary but if you do not provide it we may not include you on our stakeholder database and you might miss further consultation opportunities. Your personal information will be held by us and you can contact us to access or correct it. Please write to us at either whtbl@transport.nsw.gov.au or Transport for NSW, Locked Bag 928, North Sydney NSW 2059.